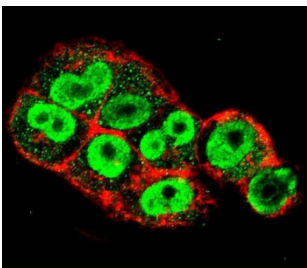


TIMP-1 Antibody (F54350)

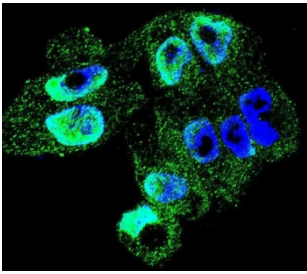
Catalog No.	Formulation	Size
F54350-0.4ML	In 1X PBS, pH 7.4, with 0.09% sodium azide	0.4 ml
F54350-0.08ML	In 1X PBS, pH 7.4, with 0.09% sodium azide	0.08 ml

[Bulk quote request](#)

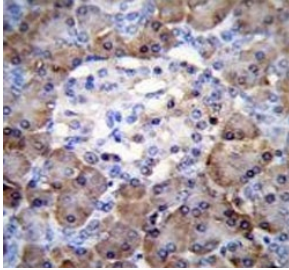
Availability	1-3 business days
Species Reactivity	Human
Format	Purified
Host	Rabbit
Clonality	Polyclonal (rabbit origin)
Isotype	Rabbit Ig
Purity	SAS precipitation
UniProt	P01033
Applications	Flow Cytometry : 1:25 (1x10e6 cells) Immunofluorescence : 1:25 Western Blot : 1:500-1:2000 Immunohistochemistry (FFPE) : 1:25
Limitations	This TIMP-1 antibody is available for research use only.



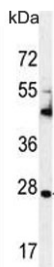
Immunofluorescent staining of fixed and permeabilized human A2058 cells with TIMP-1 antibody (green) and anti-Actin (red).



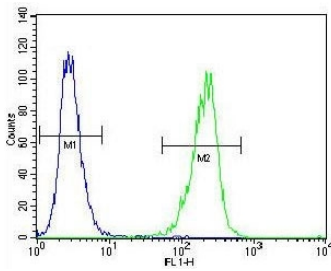
Immunofluorescent staining of fixed and permeabilized human A2058 cells with TIMP-1 antibody (green) and DAPI nuclear stain (blue).



IHC testing of FFPE human pancreas tissue with TIMP-1 antibody. HIER: steam section in pH6 citrate buffer for 20 min and allow to cool prior to staining.



Western blot testing of human CCRF-CEM cell lysate with TIMP-1 antibody. Expected molecular weight: 23-28 kDa depending on the level of glycosylation.



Flow cytometry testing of fixed and permeabilized human A2058 cells with TIMP-1 antibody; Blue=isotype control, Green= TIMP-1 antibody.

Description

This gene belongs to the TIMP gene family. The proteins encoded by this gene family are natural inhibitors of the matrix metalloproteinases (MMPs), a group of peptidases involved in degradation of the extracellular matrix. In addition to its inhibitory role against most of the known MMPs, the encoded protein is able to promote cell proliferation in a wide range of cell types, and may also have an anti-apoptotic function. Transcription of this gene is highly inducible in response to many cytokines and hormones. In addition, the expression from some but not all inactive X chromosomes suggests that this gene inactivation is polymorphic in human females. This gene is located within intron 6 of the synapsin I gene and is transcribed in the opposite direction.

Application Notes

The stated application concentrations are suggested starting points. Titration of the TIMP-1 antibody may be required due to differences in protocols and secondary/substrate sensitivity.

Immunogen

A portion of amino acids 157-188 from the human protein was used as the immunogen for the TIMP-1 antibody.

Storage

Aliquot the TIMP-1 antibody and store frozen at -20oC or colder. Avoid repeated freeze-thaw cycles.