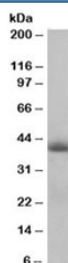


TIMM50 Antibody (R33215)

Catalog No.	Formulation	Size
R33215-100UG	0.5 mg/ml in 1X TBS, pH7.3, with 0.5% BSA (US sourced) and 0.02% sodium azide	100 ug

[Bulk quote request](#)

Availability	1-3 business days
Species Reactivity	Human
Predicted Reactivity	Cow, Dog, Mouse, Rat
Format	Antigen affinity purified
Host	Goat
Clonality	Polyclonal (goat origin)
Isotype	Goat Ig
Purity	Antigen affinity
UniProt	Q3ZCQ8
Gene ID	92609
Applications	Western Blot : 0.5-2ug/ml ELISA (peptide) LOD : 1:16000
Limitations	This TIMM50 antibody is available for research use only.



Western blot testing of human heart lysate with TIMM50 antibody at 0.5ug/ml. Predicted molecular weight: ~40/50/28kDa (isoforms 1/2/3).

Description

Additional name(s) for this target protein: Translocase of inner mitochondrial membrane 50

Application Notes

Optimal dilution of the TIMM50 antibody should be determined by the researcher.

Immunogen

Amino acids CDVRTVLEHYALEDD were used as the immunogen for this TIMM50 antibody. This sequence is common to isoforms 1/2/3 (UniProt Q3ZCQ8).

Storage

Aliquot and store the TIMM50 antibody at -20oC.