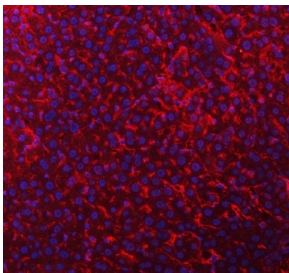


## Timd2 Antibody / T-cell immunoglobulin mucin receptor 2 (RQ7507)

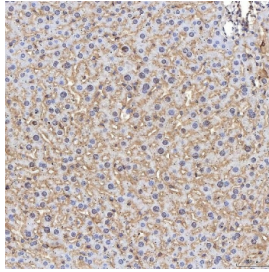
Catalog No.	Formulation	Size
RQ7507	0.5mg/ml if reconstituted with 0.2ml sterile DI water	100 ug

### Bulk quote request

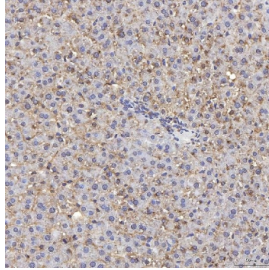
<b>Availability</b>	1-3 business days
<b>Species Reactivity</b>	Mouse, Rat
<b>Format</b>	Antigen affinity purified
<b>Host</b>	Rabbit
<b>Clonality</b>	Polyclonal (rabbit origin)
<b>Isotype</b>	Rabbit IgG
<b>Purity</b>	Antigen affinity purified
<b>Buffer</b>	Lyophilized from 1X PBS with 2% Trehalose
<b>UniProt</b>	Q8R183
<b>Localization</b>	Cell membrane
<b>Applications</b>	Western Blot : 0.5-1ug/ml Immunohistochemistry (FFPE) : 2-5ug/ml Flow Cytometry : 1-3ug/million cells Immunofluorescence : 5ug/ml
<b>Limitations</b>	This Timd2 antibody is available for research use only.



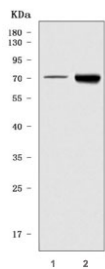
Immunofluorescent staining of FFPE mouse liver tissue with Timd2 antibody (red) and DAPI nuclear stain (blue). HIER: steam section in pH8 EDTA buffer for 20 min.



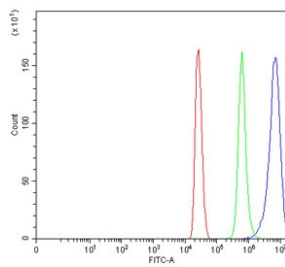
IHC staining of FFPE mouse liver tissue with Timd2 antibody. HIER: boil tissue sections in pH8 EDTA for 20 min and allow to cool before testing.



IHC staining of FFPE rat liver tissue with Timd2 antibody. HIER: boil tissue sections in pH8 EDTA for 20 min and allow to cool before testing.



Western blot testing of 1) mouse liver and 2) mouse kidney tissue lysate with Timd2 antibody. Predicted molecular weight ~34 kDa but may be observed at higher molecular weights due to glycosylation.



Flow cytometry testing of mouse HEPA1-6 cells with Timd2 antibody at 1ug/million cells (blocked with goat sera); Red=cells alone, Green=isotype control, Blue= Timd2 antibody.

## Description

Enables ferritin receptor activity. Acts upstream of or within iron ion transport. Located in cell surface. Is expressed in 4-cell stage embryo; liver; liver left lobe; liver right lobe; and metanephros. Human ortholog(s) of this gene implicated in atopic dermatitis. Orthologous to human HAVCR1 (hepatitis A virus cellular receptor 1).

## Application Notes

Optimal dilution of the Timd2 antibody should be determined by the researcher.

## Immunogen

Amino acids KKVVERTRCEDQVYIIEDTPYEE from the mouse protein were used as the immunogen for the Timd2 antibody.

## Storage

After reconstitution, the Timd2 antibody can be stored for up to one month at 4oC. For long-term, aliquot and store at -20oC. Avoid repeated freezing and thawing.

