

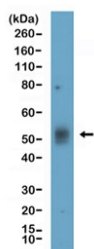
## TIM-3 Antibody / HAVCR2 [clone RM448] (R20463)

Catalog No.	Formulation	Size
R20463-0.1ML	Antibody in PBS with 50% glycerol, 1% BSA and 0.09% sodium azide	100 ul

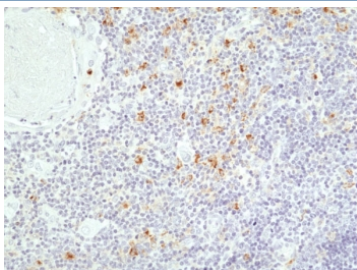
Recombinant **RABBIT MONOCLONAL**

[Bulk quote request](#)

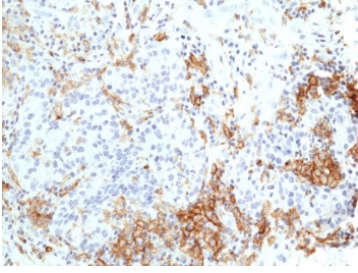
<b>Availability</b>	1-3 business days
<b>Species Reactivity</b>	Human
<b>Format</b>	Purified
<b>Host</b>	Rabbit
<b>Clonality</b>	Recombinant Rabbit Monoclonal
<b>Isotype</b>	Rabbit IgG
<b>Clone Name</b>	RM448
<b>Purity</b>	Protein A purified from animal origin-free supernatant
<b>UniProt</b>	Q8TDQ0
<b>Localization</b>	Cell surface, cytoplasmic
<b>Applications</b>	Immunohistochemistry (FFPE) : 1:50-1:100 Western Blot : 1:500-1:1000
<b>Limitations</b>	This recombinant TIM-3 antibody is available for research use only.



Western blot testing of human Daudi cell lysate with recombinant TIM-3 antibody at 1:1000. Expected molecular weight: 33-70 kDa depending on glycosylation level.



IHC staining of FFPE human thymus tissue with recombinant TIM-3 antibody at 1:200.



IHC staining of FFPE human lung cancer tissue with recombinant TIM-3 antibody at 1:200.

## Description

This antibody reacts to human TIM3 / T-cell immunoglobulin and mucin domain-containing protein 3 / HAVCR2 / Hepatitis A virus cellular receptor 2.

## Application Notes

The stated application concentrations are suggested starting points. Titration of the recombinant TIM-3 antibody may be required due to differences in protocols and secondary/substrate sensitivity.

## Immunogen

Recombinant human TIM3/HAVCR2 protein was used as the immunogen for the recombinant TIM-3 antibody.

## Storage

Store the recombinant TIM-3 antibody at -20oC.