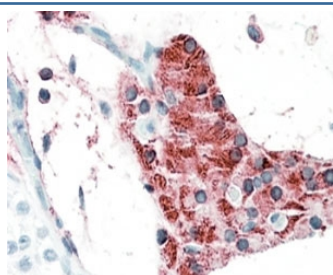


## TIAM2 Antibody / T-lymphoma invasion and metastasis-inducing protein 1 (R36215)

Catalog No.	Formulation	Size
R36215-100UG	0.5 mg/ml in 1X TBS, pH7.3, with 0.5% BSA (US sourced) and 0.02% sodium azide	100 ug

[Bulk quote request](#)

<b>Availability</b>	1-3 business days
<b>Species Reactivity</b>	Human
<b>Predicted Reactivity</b>	Mouse, Dog
<b>Format</b>	Antigen affinity purified
<b>Host</b>	Goat
<b>Clonality</b>	Polyclonal (goat origin)
<b>Isotype</b>	Goat Ig
<b>Purity</b>	Antigen affinity
<b>Gene ID</b>	26230
<b>Localization</b>	Cytoplasmic, possible nuclear and membrane
<b>Applications</b>	Immunohistochemistry (FFPE) : 5-10ug/ml ELISA (peptide) LOD : 1:64000
<b>Limitations</b>	This TIAM2 antibody is available for research use only.



IHC testing of FFPE human testis with TIAM2 antibody at 5ug/ml. HIER: steamed with pH6 citrate buffer, AP-staining.

### Description

Additional name(s) for this target protein: T-cell lymphoma invasion and metastasis 2

## Application Notes

Optimal dilution of the TIAM2 antibody should be determined by the researcher.

1. This TIAM2 antibody is specific for isoform a.

## Immunogen

Amino acids TLQGSKNHSNT were used as the immunogen for this TIAM2 antibody.

## Storage

Aliquot and store the TIAM2 antibody at -20oC.