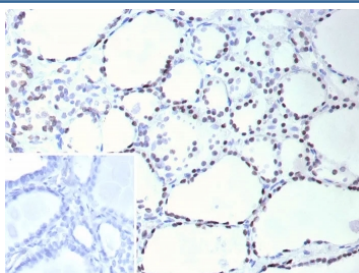


Thyroid transcription factor 1 Antibody / TTF-1 / NX2.1 [clone NX2.1/9036] (V5552)

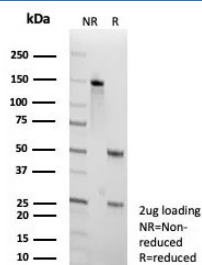
Catalog No.	Formulation	Size
V5552-100UG	0.2 mg/ml in 1X PBS with 0.1 mg/ml BSA (US sourced), 0.05% sodium azide	100 ug
V5552-20UG	0.2 mg/ml in 1X PBS with 0.1 mg/ml BSA (US sourced), 0.05% sodium azide	20 ug
V5552SAF-100UG	1 mg/ml in 1X PBS; BSA free, sodium azide free	100 ug

[Bulk quote request](#)

Availability	1-3 business days
Species Reactivity	Human
Format	Purified
Host	Mouse
Clonality	Monoclonal (mouse origin)
Isotype	Mouse IgG2b, kappa
Clone Name	NX2.1/9036
Purity	Protein A/G affinity
UniProt	P43699
Localization	Nucleus
Applications	Immunohistochemistry (FFPE) : 1-2ug/ml
Limitations	This Thyroid transcription factor 1 antibody is available for research use only.



IHC staining of FFPE human thyroid tissue with Thyroid transcription factor 1 antibody (clone NX2.1/9036). Inset: PBS used in place of primary Ab (secondary Ab negative control). HIER: boil tissue sections in pH 9 10mM Tris with 1mM EDTA for 20 min and allow to cool before testing.



SDS-PAGE analysis of purified, BSA-free Thyroid transcription factor 1 antibody (clone NX2.1/9036) as confirmation of integrity and purity.

Description

Recognizes a protein of 40kDa, identified as Thyroid transcription factor-1 (TTF-1). TTF-1 is a member of the NKx2 family of homeodomain transcription factors. It is expressed in epithelial cells of the thyroid gland and the lung. Nuclei from liver, stomach, pancreas, small intestine, colon, kidney, breast, skin, testes, pituitary, prostate, and adrenal glands are unreactive. Anti-TTF-1 is useful in differentiating primary adenocarcinoma of the lung from metastatic carcinomas originating in the breast, mediastinal germ cell tumors, and malignant mesothelioma. It can also be used to differentiate small cell lung carcinoma from lymphoid infiltrates. Loss of TTF-1 expression in non-small cell lung carcinoma has been associated with aggressive behavior of such neoplasms. TTF-1 reactivity is also seen in thyroid malignancies.

Application Notes

Optimal dilution of the Thyroid transcription factor 1 antibody should be determined by the researcher.

Immunogen

A recombinant fragment (within amino acids 1-200) of human TTF-1 protein was used as the immunogen for the Thyroid transcription factor 1 antibody.

Storage

Aliquot the Thyroid transcription factor 1 antibody and store frozen at -20oC or colder. Avoid repeated freeze-thaw cycles.