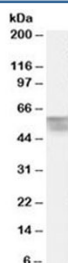


## Thyroid hormone receptor alpha Antibody (R34398)

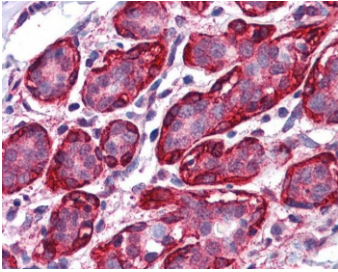
Catalog No.	Formulation	Size
R34398-100UG	0.5 mg/ml in 1X TBS, pH7.3, with 0.5% BSA (US sourced) and 0.02% sodium azide	100 ug

[Bulk quote request](#)

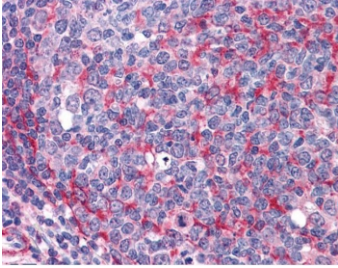
Availability	1-3 business days
Species Reactivity	Human
Predicted Reactivity	Mouse, Rat, Dog, Pig, Cow
Format	Antigen affinity purified
Clonality	Polyclonal (goat origin)
Isotype	Goat Ig
Purity	Antigen affinity
Gene ID	7067
Localization	Cytoplasmic, nuclear
Applications	Western Blot : 0.5-1.5ug/ml IHC (FFPE) : 3.75ug/ml ELISA (peptide) LOD : 1:32000
Limitations	This Thyroid hormone receptor alpha antibody is available for research use only.



Western blot testing of human bone marrow lysate with Thyroid hormone receptor alpha antibody at 0.5ug/ml. Predicted molecular weight: ~55 kDa.



IHC testing of FFPE human breast tissue with Thyroid hormone receptor alpha antibody at 3.75ug/ml. Required HIER: steamed antigen retrieval with pH6 citrate buffer; AP-staining.



IHC testing of FFPE human tonsil tissue with Thyroid hormone receptor alpha antibody at 3.75ug/ml. Required HIER: steamed antigen retrieval with pH6 citrate buffer; AP-staining.

## Description

Additional name(s) for this target protein: THRA

## Application Notes

Optimal dilution of the Thyroid hormone receptor alpha antibody should be determined by the researcher.

## Immunogen

Amino acids KEEMIRSLQQRP were used as the immunogen for this Thyroid hormone receptor alpha antibody.

## Storage

Aliquot and store the Thyroid hormone receptor alpha antibody at -20oC.