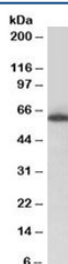


## TH1L Antibody (R34850)

Catalog No.	Formulation	Size
R34850-100UG	0.5 mg/ml in 1X TBS, pH7.3, with 0.5% BSA (US sourced) and 0.02% sodium azide	100 ug

[Bulk quote request](#)

Availability	1-3 business days
Species Reactivity	Human
Predicted Reactivity	Cow, Dog, Mouse, Pig
Format	Antigen affinity purified
Clonality	Polyclonal (goat origin)
Isotype	Goat Ig
Purity	Antigen affinity
Gene ID	51497
Applications	Western Blot : 0.5-2ug/ml ELISA (peptide) LOD : 1:16000
Limitations	This TH1L antibody is available for research use only.



Western blot testing of nuclear Jurkat lysate with TH1L antibody at 0.5ug/ml. Predicted molecular weight: ~66kDa.

## Description

Additional name(s) for this target protein: TH1-like protein

## Application Notes

Optimal dilution of the TH1L antibody should be determined by the researcher.

## Immunogen

Amino acids NKRVSINKDE were used as the immunogen for this TH1L antibody.

## **Storage**

Aliquot and store the TH1L antibody at -20oC.