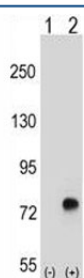


## TGFBI Antibody (F44993)

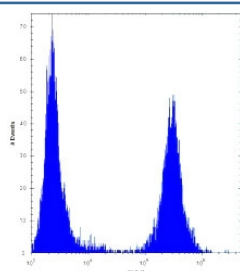
Catalog No.	Formulation	Size
F44993-0.4ML	In 1X PBS, pH 7.4, with 0.09% sodium azide	0.4 ml
F44993-0.08ML	In 1X PBS, pH 7.4, with 0.09% sodium azide	0.08 ml

[Bulk quote request](#)

<b>Availability</b>	1-3 business days
<b>Species Reactivity</b>	Human
<b>Predicted Reactivity</b>	Mouse, Pig, Rabbit
<b>Format</b>	Antigen affinity purified
<b>Clonality</b>	Polyclonal (rabbit origin)
<b>Isotype</b>	Rabbit Ig
<b>Purity</b>	Antigen affinity
<b>UniProt</b>	Q15582
<b>Applications</b>	Western Blot : 1:1000 Flow Cytometry : 1:10-1:50
<b>Limitations</b>	This TGFBI antibody is available for research use only.



Western blot analysis of TGFBI antibody and 293 cell lysate either nontransfected (Lane 1) or transiently transfected (2) with the TGFBI gene.



TGFBI antibody flow cytometric analysis of U251 cells (right histogram) compared to a [negative control](#) (left histogram). FITC-conjugated goat-anti-rabbit secondary Ab was used for the analysis.

## Description

Transforming growth factor-beta-induced protein ig-h3 is a RGD-containing protein that binds to type I, II and IV collagens. The RGD motif is found in many extracellular matrix proteins modulating cell adhesion and serves as a ligand recognition sequence for several integrins. This protein plays a role in cell-collagen interactions and may be involved in endochondrial bone formation in cartilage. The protein is induced by transforming growth factor-beta and acts to inhibit cell adhesion. Mutations in this gene are associated with multiple types of corneal dystrophy.

## Application Notes

Titration of the TGFBI antibody may be required due to differences in protocols and secondary/substrate sensitivity.

## Immunogen

A portion of amino acids 106-135 from the human protein was used as the immunogen for this TGFBI antibody.

## Storage

Aliquot the TGFBI antibody and store frozen at -20oC or colder. Avoid repeated freeze-thaw cycles.