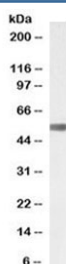


TGFB2 Antibody (pre-pro region) (R36470)

| Catalog No. | Formulation | Size |
|--------------|---|--------|
| R36470-100UG | 0.5 mg/ml in 1X TBS, pH7.3, with 0.5% BSA (US sourced) and 0.02% sodium azide | 100 ug |

[Bulk quote request](#)

| | |
|--------------------|--|
| Availability | 1-3 business days |
| Species Reactivity | Human, Dog, Cow, Pig |
| Format | Antigen affinity purified |
| Clonality | Polyclonal (goat origin) |
| Isotype | Goat Ig |
| Purity | Antigen affinity |
| UniProt | P61812 |
| Applications | Western Blot : 0.3-1ug/ml ELISA (peptide) LOD : 1:32000 |
| Limitations | This TGFB2 antibody is available for research use only. |



Western blot testing of human breast cancer lysate with TGFB2 antibody at 0.3ug/ml.
Predicted molecular weight ~50 kDa.

Description

Additional name(s) for this target protein: Transforming growth factor beta 2; prepro-transforming growth factor beta-2; G-TSF; Glioblastoma-derived T-cell suppressor factor

Application Notes

Optimal dilution of the TGFB2 antibody should be determined by the researcher.

Immunogen

Amino acids STYTSGDQKTIKSTR were used as the immunogen for this TGFB2 antibody. This sequence is from the latency associated peptide region.

Storage

Aliquot and store the TGFB2 antibody at -20oC.