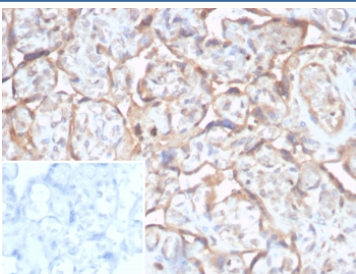


TGF beta 2 Antibody / TGFB2 [clone TGFB2/1679] (V4810)

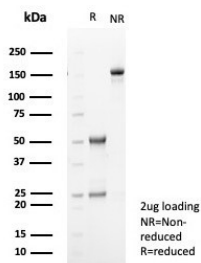
Catalog No.	Formulation	Size
V4810-100UG	0.2 mg/ml in 1X PBS with 0.1 mg/ml BSA (US sourced), 0.05% sodium azide	100 ug
V4810-20UG	0.2 mg/ml in 1X PBS with 0.1 mg/ml BSA (US sourced), 0.05% sodium azide	20 ug
V4810SAF-100UG	1 mg/ml in 1X PBS; BSA free, sodium azide free	100 ug

Bulk quote request

Availability	1-3 business days
Species Reactivity	Human
Format	Purified
Host	Mouse
Clonality	Monoclonal (mouse origin)
Isotype	Mouse IgG1, kappa
Clone Name	TGFB2/1679
Purity	Protein A/G affinity
UniProt	P10600
Localization	Secreted
Applications	Immunohistochemistry (FFPE) : 1-2ug/ml for 30 min at RT
Limitations	This TGF beta 2 antibody is available for research use only.



IHC staining of FFPE human prostate carcinoma tissue with TGF beta 2 antibody (clone TGFB2/1679). Inset: PBS used in place of primary Ab (secondary Ab negative control).
 HIER: boil tissue sections in pH 9 10mM Tris with 1mM EDTA for 20 min and allow to cool before testing.



SDS-PAGE analysis of purified, BSA-free TGF beta 2 antibody (clone TGFB2/1679) as confirmation of integrity and purity.

Description

Transforming growth factor Bs (TGFbs) were originally discovered due to their ability to promote anchorage-independent growth of rat NRK fibroblasts in the presence of TGFa. It is now realized that TGFbs mediate many cell-cell interactions that occur during embryonic development. Three TGFbs have been identified in mammals. TGFb1, TGFb2 and TGFb3 are each synthesized as precursor proteins that are very similar in that each is cleaved to yield a 112 amino acid polypeptide that remains associated with the latent portion of the molecules. Biologically active TGFb requires dimerization of the monomers (usually homodimers) and release of the latent peptide portion. Overall, the mature region of the TGFb3 protein has approximately 80% identity to the mature region of both TGFb1 and TGFb2. However, the NH2 terminals or precursor regions of their molecules share only 27% sequence identity.

Application Notes

Optimal dilution of the TGF beta 2 antibody should be determined by the researcher.

Immunogen

Recombinant full-length human protein was used as the immunogen for the TGF beta 2 antibody.

Storage

Aliquot the TGF beta 2 antibody and store frozen at -20oC or colder. Avoid repeated freeze-thaw cycles.