

## TGF Beta 2 Antibody (F44149)

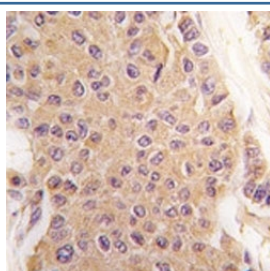
Catalog No.	Formulation	Size
F44149-0.4ML	In 1X PBS, pH 7.4, with 0.09% sodium azide	0.4 ml
F44149-0.08ML	In 1X PBS, pH 7.4, with 0.09% sodium azide	0.08 ml

[Bulk quote request](#)

<b>Availability</b>	1-3 business days
<b>Species Reactivity</b>	Human
<b>Format</b>	Purified
<b>Clonality</b>	Polyclonal (rabbit origin)
<b>Isotype</b>	Rabbit Ig
<b>Purity</b>	Purified
<b>UniProt</b>	P61812
<b>Applications</b>	Western Blot : 1:1000 IHC (Paraffin) : 1:50
<b>Limitations</b>	This TGF Beta 2 antibody is available for research use only.



TGF Beta 2 antibody western blot analysis in Raji lysate. Predicted molecular weight ~50 kDa



IHC analysis of FFPE human breast carcinoma tissue stained with TGF Beta 2 antibody

## Description

Transforming growth factor-beta 2 (TGF- $\beta$ 2) is a cytokine that performs many cellular functions and has a vital role during embryonic development. It is an extracellular glycosylated protein. It is known to suppress the effects of interleukin dependent T-cell tumors. There are two named isoforms of this protein, created by alternative splicing of the same gene.

## Application Notes

Titration of the TGF Beta 2 antibody may be required due to differences in protocols and secondary/substrate sensitivity.

## Immunogen

A portion of amino acids 277-306 from the human protein was used as the immunogen for this TGF Beta 2 antibody.

## Storage

Aliquot the TGF Beta 2 antibody and store frozen at -20oC or colder. Avoid repeated freeze-thaw cycles.