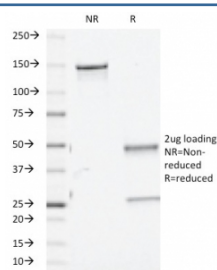


## TGF beta 1/2/3 Antibody [clone TGFB/510] (V8984)

Catalog No.	Formulation	Size
V8984-100UG	0.2 mg/ml in 1X PBS with 0.1 mg/ml BSA (US sourced), 0.05% sodium azide	100 ug
V8984-20UG	0.2 mg/ml in 1X PBS with 0.1 mg/ml BSA (US sourced), 0.05% sodium azide	20 ug
V8984SAF-100UG	1 mg/ml in 1X PBS; BSA free, sodium azide free	100 ug

[Bulk quote request](#)

<b>Availability</b>	1-3 business days
<b>Species Reactivity</b>	Human, Mouse, Rat
<b>Format</b>	Purified
<b>Clonality</b>	Monoclonal (mouse origin)
<b>Isotype</b>	Mouse IgG1, kappa
<b>Clone Name</b>	TGFB/510
<b>Purity</b>	Protein A/G affinity
<b>UniProt</b>	P01137 ; P10600 ; P61812
<b>Localization</b>	Cytoplasm and extracellular (secreted)
<b>Applications</b>	ELISA : 0.1-0.4ug/ml - Detection;2-8ug/ml - Capture (order BSA-free format for coating)
<b>Limitations</b>	This TGF beta 1/2/3 antibody is available for research use only.



SDS-PAGE analysis of purified, BSA-free TGF beta 1/2/3 antibody (clone TGFB/510) as confirmation of integrity and purity.

## Description

This mAb recognizes TGF beta 1, 2 and 3. TGFs inhibit the growth of epithelial cells and stimulate the growth of mesenchymal cells. Most breast lesions, benign and malignant, involve abnormal proliferation and altered architecture of stromal and/or epithelial elements.

## Application Notes

Optimal dilution of the TGF beta 1/2/3 antibody should be determined by the researcher.

## Immunogen

Full length recombinant human TGF-beta2 protein was used as the immunogen for the TGF beta 1/2/3 antibody.

## Storage

Aliquot the TGF beta 1/2/3 antibody and store frozen at -20oC or colder. Avoid repeated freeze-thaw cycles.