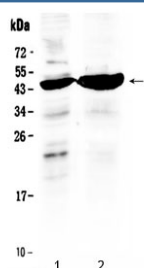


TFPI Antibody / Tissue factor pathway inhibitor (R32680)

Catalog No.	Formulation	Size
R32680	0.5mg/ml if reconstituted with 0.2ml sterile DI water	100 ug

Bulk quote request

Availability	1-3 business days
Species Reactivity	Human
Format	Antigen affinity purified
Clonality	Polyclonal (rabbit origin)
Isotype	Rabbit IgG
Purity	Antigen affinity
Buffer	Lyophilized from 1X PBS with 2.5% BSA, 0.025% sodium azide
UniProt	P10646
Applications	Western Blot : 0.5-1ug/ml
Limitations	This TFPI antibody is available for research use only.



Western blot testing of human 1) HeLa and 2) MCF7 cell lysate with TFPI antibody at 0.5ug/ml. Predicted molecular weight ~35 kDa but routinely observed at 40-50 kDa.

Description

TFPI (Tissue factor pathway inhibitor) also known as EPI, LACI, TFI and TFPT1 is a single-chain polypeptide which can reversibly inhibit Factor Xa (Xa) and Thrombin (Factor IIa). While Xa is inhibited, the Xa-TFPI complex can subsequently also inhibit the FVIIa-tissue factor complex. TFPI contributes significantly to the inhibition of Xa in vivo, despite being present at concentrations of only 2.5 nM. The gene for TFPI is located on chromosome 2q31-q32.1, and has nine exons which span 70 kb. TFPI has a relative molecular mass of 34-40 kDa depending on the degree of proteolysis of the C-terminal region.

Application Notes

Optimal dilution of the TFPI antibody should be determined by the researcher.

Immunogen

Amino acids N253-M304 from the human protein were used as the immunogen for the TFPI antibody.

Storage

After reconstitution, the TFPI antibody can be stored for up to one month at 4oC. For long-term, aliquot and store at -20oC. Avoid repeated freezing and thawing.