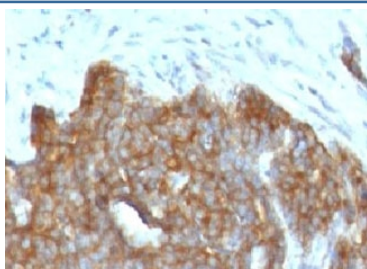


TFF1 Antibody / Estrogen Inducible Protein pS2 [clone BCEIP1] (V7165)

Catalog No.	Formulation	Size
V7165-100UG	0.2 mg/ml in 1X PBS with 0.1 mg/ml BSA (US sourced) and 0.05% sodium azide	100 ug
V7165-20UG	0.2 mg/ml in 1X PBS with 0.1 mg/ml BSA (US sourced) and 0.05% sodium azide	20 ug
V7165SAF-100UG	1 mg/ml in 1X PBS; BSA free, sodium azide free	100 ug
V7165IHC-7ML	Prediluted in 1X PBS with 0.1 mg/ml BSA (US sourced) and 0.05% sodium azide; *For IHC use only*	7 ml

Bulk quote request

Availability	1-3 business days
Species Reactivity	Human
Format	Purified
Clonality	Monoclonal (mouse origin)
Isotype	Mouse IgG1, kappa
Clone Name	BCEIP1
Purity	Protein G affinity chromatography
UniProt	P04155
Localization	Cytoplasmic, secreted
Applications	Immunohistochemistry (FFPE) : 1-2ug/ml for 30 min at RT (1) Prediluted IHC Only Format : incubate for 30 min at RT (2)
Limitations	This TFF1 antibody is available for research use only.



IHC testing of FFPE ovarian carcinoma with TFF1 antibody (clone BCEIP1).

Description

TFF1/Breast cancer estrogen inducible protein pS2 is a trefoil peptide. Trefoil peptides are protease resistant molecules secreted throughout the gut that play a role in mucosal healing. These peptides contain three intra-chain disulfide bonds, forming the trefoil motif, or P-domain. TFF1/pS2 is known to form dimers and this dimerization is thought to play a role in its protective and healing properties. About 60% of breast carcinomas are positive for pS2. Staining is cytoplasmic, often with localization to the Golgi apparatus. TFF1 is shown to be localized in normal stomach mucosa, gastric fluid, goblet cells in the colon and small intestine, and in ulcerations of the gastrointestinal tract.

Application Notes

Titering of the TFF1 antibody may be required for optimal performance.

1. FFPE testing requires sections to be boiled in pH6 10mM citrate buffer for 10-20 minutes, followed by cooling at RT for 20 minutes, prior to staining.
2. The prediluted format is supplied in a dropper bottle and is optimized for use in IHC. After epitope retrieval step (if required), drip mAb solution onto the tissue section and incubate at RT for 30 min.

Immunogen

A C-terminus peptide was used as the immunogen for the TFF1 antibody.

Storage

Store the TFF1 antibody at 2-8oC (with azide) or aliquot and store at -20oC or colder (without azide).