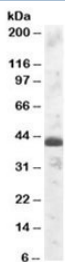


TFEC Antibody (R36201)

Catalog No.	Formulation	Size
R36201-100UG	0.5 mg/ml in 1X TBS, pH7.3, with 0.5% BSA (US sourced) and 0.02% sodium azide	100 ug

[Bulk quote request](#)

Availability	1-3 business days
Species Reactivity	Human
Format	Antigen affinity purified
Host	Goat
Clonality	Polyclonal (goat origin)
Isotype	Goat Ig
Purity	Antigen affinity
Gene ID	22797
Applications	Western Blot : 0.5-2ug/ml ELISA (peptide) LOD : 1:32000
Limitations	This TFEC antibody is available for research use only.



Western blot testing of human testis lysate with TFEC antibody at 1ug/ml. Predicted molecular weight: ~39kDa.

Description

Additional name(s) for this target protein: Transcription factor EC, TCFEC, TFECL

Application Notes

Optimal dilution of the TFEC antibody should be determined by the researcher.

Immunogen

Amino acids TLDHQIINPTLK were used as the immunogen for this TFEC antibody.

Storage

Aliquot and store the TFEC antibody at -20oC.