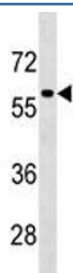


## TFEB Antibody (F46977)

Catalog No.	Formulation	Size
F46977-0.4ML	In 1X PBS, pH 7.4, with 0.09% sodium azide	0.4 ml
F46977-0.08ML	In 1X PBS, pH 7.4, with 0.09% sodium azide	0.08 ml

[Bulk quote request](#)

<b>Availability</b>	1-3 business days
<b>Species Reactivity</b>	Human
<b>Predicted Reactivity</b>	Mouse
<b>Format</b>	Antigen affinity purified
<b>Clonality</b>	Polyclonal (rabbit origin)
<b>Isotype</b>	Rabbit Ig
<b>Purity</b>	Antigen affinity
<b>UniProt</b>	P19484
<b>Applications</b>	Western Blot : 1:1000
<b>Limitations</b>	This TFEB antibody is available for research use only.



TFEB antibody western blot analysis in HepG2 lysate. Expected molecular weight: 53-60 kDa (unmodified), 65-70 kDa (modified).

## Description

Transcription factor that specifically recognizes and binds E-box sequences (3'-CANNTG-5'). Efficient DNA-binding requires dimerization with itself or with another MiT/TFE family member such as TFE3 or MITF. In association with TFE3, activates the expression of CD40L in T-cells, thereby playing a role in T-cell-dependent antibody responses in activated CD4(+) T-cells and thymus-dependent humoral immunity. Specifically recognizes and binds the CLEAR-box sequence (5'-GTCACGTGAC-3') present in the regulatory region of many lysosomal genes, leading to activate their expression. It thereby plays a central role in expression of lysosomal genes. Specifically recognizes the gamma-E3 box, a subset of E-boxes, present in the heavy-chain immunoglobulin enhancer. Plays a role in the signal transduction processes required

for normal vascularization of the placenta.

## **Application Notes**

Titration of the TFEB antibody may be required due to differences in protocols and secondary/substrate sensitivity.

## **Immunogen**

A portion of amino acids 271-300 from the human protein was used as the immunogen for this TFEB antibody.

## **Storage**

Aliquot the TFEB antibody and store frozen at -20oC or colder. Avoid repeated freeze-thaw cycles.