

TFCP2L1 Antibody / CRTR-1 (F54669)

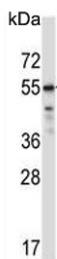
Catalog No.	Formulation	Size
F54669-0.4ML	In 1X PBS, pH 7.4, with 0.09% sodium azide	0.4 ml
F54669-0.08ML	In 1X PBS, pH 7.4, with 0.09% sodium azide	0.08 ml

[Bulk quote request](#)

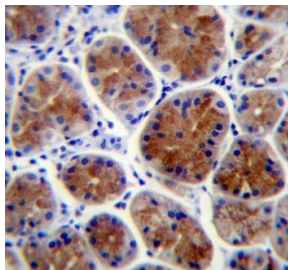
Availability	1-3 business days
Species Reactivity	Human, Mouse
Format	Purified
Host	Rabbit
Clonality	Polyclonal (rabbit origin)
Isotype	Rabbit Ig
Purity	Antigen affinity purified
UniProt	Q9NZI6
Localization	Nuclear, cytoplasmic
Applications	Flow Cytometry : 1:25 (1x10 ⁶ cells) Immunohistochemistry (FFPE) : 1:25 Western Blot : 1:500-1:2000
Limitations	This TFCP2L1 antibody is available for research use only.



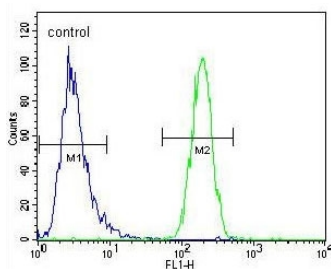
Western blot testing of mouse stomach tissue lysate with TFCP2L1 antibody. Predicted molecular weight ~55 kDa.



Western blot testing of human WiDr cell lysate with TFCP2L1 antibody. Predicted molecular weight ~55 kDa.



IHC testing of FFPE human stomach tissue with TFCP2L1 antibody. HIER: steam section in pH6 citrate buffer for 20 min and allow to cool prior to staining.



Flow cytometry testing of human WiDr cells with TFCP2L1 antibody; Blue=isotype control, Green= TFCP2L1 antibody.

Description

TFCP2L1 is a transcriptional suppressor. It may suppress UBP1-mediated transcriptional activation. Modulates the placental expression of CYP11A1.

Application Notes

The stated application concentrations are suggested starting points. Titration of the TFCP2L1 antibody may be required due to differences in protocols and secondary/substrate sensitivity.

Immunogen

A portion of amino acids 222-251 from the human protein was used as the immunogen for the TFCP2L1 antibody.

Storage

Aliquot the TFCP2L1 antibody and store frozen at -20°C or colder. Avoid repeated freeze-thaw cycles.