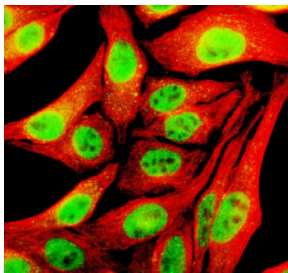


## TFAP4 Antibody / Transcription factor AP-4 (FY13050)

Catalog No.	Formulation	Size
FY13050	Adding 0.2 ml of distilled water will yield a concentration of 500 ug/ml	100 ug

### Bulk quote request

<b>Availability</b>	1-2 days
<b>Species Reactivity</b>	Human
<b>Format</b>	Lyophilized
<b>Host</b>	Rabbit
<b>Clonality</b>	Polyclonal (rabbit origin)
<b>Isotype</b>	Rabbit IgG
<b>Purity</b>	Immunogen affinity purified
<b>Buffer</b>	Each vial contains 4 mg Trehalose, 0.9 mg NaCl, 0.2 mg Na <sub>2</sub> HPO <sub>4</sub> .
<b>UniProt</b>	Q01664
<b>Localization</b>	Nuclear
<b>Applications</b>	Western Blot : 0.25-0.5ug/ml Immunocytochemistry/Immunofluorescence : 5ug/ml Flow Cytometry : 1-3ug/million cells ELISA : 0.1-0.5ug/ml
<b>Limitations</b>	This TFAP4 antibody is available for research use only.



Immunofluorescent staining of TFAP4 using anti-TFAP4 antibody (green) and anti-Beta Tubulin antibody (red). TFAP4 was detected in an immunocytochemical section of HeLa cells. Enzyme antigen retrieval was performed using IHC enzyme antigen retrieval reagent for 15 mins. The cells were blocked with 10% goat serum. And then incubated with 5 ug/ml rabbit anti-TFAP4 antibody and mouse anti-Beta Tubulin antibody overnight at 4oC. DyLight 488 Conjugated Goat Anti-Rabbit IgG and Cy3 Conjugated Goat Anti-Mouse IgG were used as secondary antibody at 1:500 dilution and incubated for 30 minutes at 37oC. Visualize using a fluorescence microscope and filter sets appropriate for the label used.



validated for use in transcriptional control, oncogenic signaling, and developmental regulation research.

## **Application Notes**

Optimal dilution of the TFAP4 antibody should be determined by the researcher.

## **Immunogen**

E.coli-derived human TFAP4 recombinant protein (Position: M1-K299) was used as the immunogen for the TFAP4 antibody.

## **Storage**

After reconstitution, the TFAP4 antibody can be stored for up to one month at 4°C. For long-term, aliquot and store at -20°C. Avoid repeated freezing and thawing.