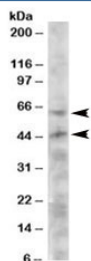


## TERF1 Antibody (R36222)

Catalog No.	Formulation	Size
R36222-100UG	0.5 mg/ml in 1X TBS, pH7.3, with 0.5% BSA (US sourced) and 0.02% sodium azide	100 ug

[Bulk quote request](#)

Availability	1-3 business days
Species Reactivity	Human
Predicted Reactivity	Cow, Pig
Format	Antigen affinity purified
Host	Goat
Clonality	Polyclonal (goat origin)
Isotype	Goat Ig
Purity	Antigen affinity
Gene ID	7013
Applications	Western Blot : 1-3ug/ml ELISA (peptide) LOD : 1:8000
Limitations	This TERF1 antibody is available for research use only.



Western blot testing of HeLa lysate with TERF1 antibody at 2ug/ml. Predicted molecular weight: ~50/48kDa (isoforms 1/2), ~65kDa (possible acetylated form).

## Description

Additional name(s) for this target protein: TRBF1, hTRF1-AS, telomeric repeat binding factor (NIMA-interacting) 1, PIN2

## Application Notes

Optimal dilution of the TERF1 antibody should be determined by the researcher.

1. This TERF1 antibody is specific for isoforms 1 and 2.

## Immunogen

Amino acids TMKKLKLISDSED were used as the immunogen for this TERF1 antibody. This sequence is common to isoforms 1 and 2.

## Storage

Aliquot and store the TERF1 antibody at -20oC.