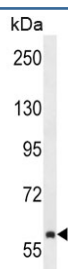


TEC Antibody (F54447)

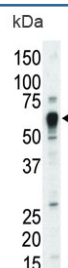
Catalog No.	Formulation	Size
F54447-0.4ML	In 1X PBS, pH 7.4, with 0.09% sodium azide	0.4 ml
F54447-0.08ML	In 1X PBS, pH 7.4, with 0.09% sodium azide	0.08 ml

[Bulk quote request](#)

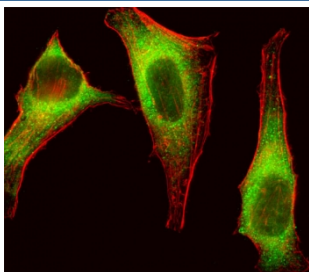
Availability	1-3 business days
Species Reactivity	Human, Mouse
Format	Purified
Clonality	Polyclonal (rabbit origin)
Isotype	Rabbit Ig
Purity	Antigen affinity purified
UniProt	P42680
Applications	Immunofluorescence : 1:25 Western Blot : 1:500-1:2000 Immunohistochemistry (FFPE) : 1:25
Limitations	This TEC antibody is available for research use only.



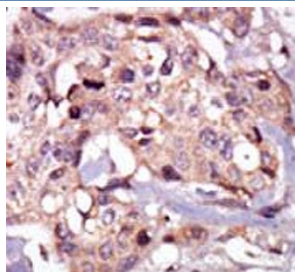
Western blot testing of human NCI-H292 cell lysate with TEC antibody. Expected molecular weight: 58-73 kDa (multiple isoforms).



Western blot testing of mouse liver lysate with TEC antibody. Expected molecular weight: 58-73 kDa (multiple isoforms).



Immunofluorescent staining of fixed and permeabilized human HeLa cells with TEC antibody (green) and anti-Actin (red).



IHC testing of FFPE human breast cancer tissue with Tec antibody. HIER: steam section in pH6 citrate buffer for 20 min and allow to cool prior to staining.

Description

TEC belongs to the TEC subfamily of non-receptor protein-tyrosine kinases containing a pleckstrin homology domain. TEC family kinases are involved in the intracellular signaling mechanisms of cytokine receptors, lymphocyte surface antigens, heterotrimeric G-protein coupled receptors, and integrin molecules. They are also key players in the regulation of the immune functions. TEC kinase is an integral component of T cell signaling and has a distinct role in T cell activation. TEC may be associated with myelodysplastic syndrome.

Application Notes

The stated application concentrations are suggested starting points. Titration of the TEC antibody may be required due to differences in protocols and secondary/substrate sensitivity.

Immunogen

A portion of amino acids 175-205 from the human protein was used as the immunogen for the TEC antibody.

Storage

Aliquot the TEC antibody and store frozen at -20°C or colder. Avoid repeated freeze-thaw cycles.