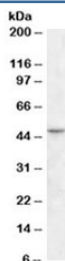


TEAD2 Antibody (R33920)

| Catalog No. | Formulation | Size |
|--------------|-------------------------------------------------------------------------------|--------|
| R33920-100UG | 0.5 mg/ml in 1X TBS, pH7.3, with 0.5% BSA (US sourced) and 0.02% sodium azide | 100 ug |

[Bulk quote request](#)

| | |
|----------------------|----------------------------------------------------------|
| Availability | 1-3 business days |
| Species Reactivity | Human |
| Predicted Reactivity | Cow, Dog, Mouse, Rat |
| Format | Antigen affinity purified |
| Host | Goat |
| Clonality | Polyclonal (goat origin) |
| Isotype | Goat Ig |
| Purity | Antigen affinity |
| Gene ID | 8463 |
| Applications | Western Blot : 1-3ug/ml ELISA (peptide) LOD : 1:64000 |
| Limitations | This TEAD2 antibody is available for research use only. |



Western blot testing of human ileum lysate with TEAD2 antibody at 1ug/ml. Predicted molecular weight: ~49kDa.

Description

Additional name(s) for this target protein: TEA domain family member 2

Application Notes

Optimal dilution of the TEAD2 antibody should be determined by the researcher.

Immunogen

Amino acids EPPDAVDSYQRH were used as the immunogen for this TEAD2 antibody.

Storage

Aliquot and store the TEAD2 antibody at -20oC.