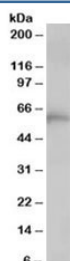


## TCP1 Antibody (R36111)

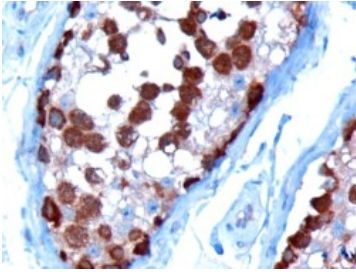
Catalog No.	Formulation	Size
R36111-100UG	0.5 mg/ml in 1X TBS, pH7.3, with 0.5% BSA (US sourced) and 0.02% sodium azide	100 ug

[Bulk quote request](#)

Availability	1-3 business days
Species Reactivity	Human
Format	Antigen affinity purified
Host	Goat
Clonality	Polyclonal (goat origin)
Isotype	Goat Ig
Purity	Antigen affinity
Gene ID	6950
Localization	Cytoplasmic, membranous
Applications	Western Blot : 0.5-2ug/ml Immunohistochemistry (FFPE) : 1-2ug/ml ELISA (peptide) LOD : 1:32000
Limitations	This TCP1 antibody is available for research use only.



Western blot testing of human lung lysate with TCP1 antibody at 1ug/ml.  
Predicted/observed molecular weight: ~60 kDa.



IHC staining of FFPE human testis with TCP1 antibody at 10ug/ml. HIER: microwaved with pH9 Tris/EDTA buffer, HRP-staining.

## Description

Additional name(s) for this target protein: T-complex protein 1

## Application Notes

Optimal dilution of the TCP1 antibody should be determined by the researcher.

## Immunogen

Amino acids SYEDAVHSGALND were used as the immunogen for this TCP1 antibody.

## Storage

Aliquot and store the TCP1 antibody at -20oC.