

TCF7L1 Antibody / TCF3 (R32325)

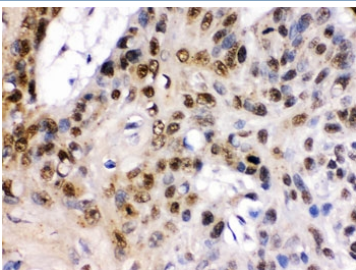
Catalog No.	Formulation	Size
R32325	0.5mg/ml if reconstituted with 0.2ml sterile DI water	100 ug

[Bulk quote request](#)

Availability	1-3 business days
Species Reactivity	Human
Format	Antigen affinity purified
Host	Rabbit
Clonality	Polyclonal (rabbit origin)
Isotype	Rabbit IgG
Purity	Antigen affinity
Buffer	Lyophilized from 1X PBS with 2.5% BSA and 0.025% sodium azide
UniProt	Q9HCS4
Localization	Nuclear
Applications	Western Blot : 0.1-0.5ug/ml IHC (FFPE) : 0.5-1ug/ml
Limitations	This TCF7L1 antibody is available for research use only.



Western blot testing of human COLO320 cell lysate with TCF7L1 antibody.
Expected/observed molecular weight ~63 kDa.



IHC testing of FFPE human esophagus squamous cell carcinoma tissue with TCF7L1 antibody. HIER: Boil the paraffin sections in pH 6, 10mM citrate buffer for 20 minutes and allow to cool prior to staining.

Description

Transcription factor 7-like 1 (T-cell specific, HMG-box), also known as TCF7L1, is a human gene. This gene encodes a member of the T cell factor/lymphoid enhancer factor family of transcription factors. These transcription factors are activated by beta catenin, mediate the Wnt signaling pathway and are antagonized by the transforming growth factor beta signaling pathway. The encoded protein contains a high mobility group-box DNA binding domain and participates in the regulation of cell cycle genes and cellular senescence.

Application Notes

Optimal dilution of the TCF7L1 antibody should be determined by the researcher.

Immunogen

Amino acids SFPATLHAHQALPVLQAQPLSLVTKSAH of human TCF7L1 were used as the immunogen for the TCF7L1 antibody.

Storage

After reconstitution, the TCF7L1 antibody can be stored for up to one month at 4oC. For long-term, aliquot and store at -20oC. Avoid repeated freezing and thawing.