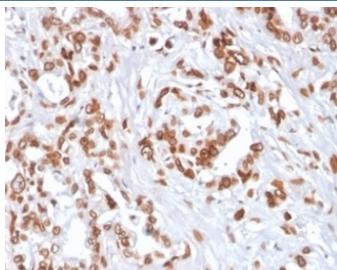


TCF4 Antibody [clone TCF4/2252] (V8990)

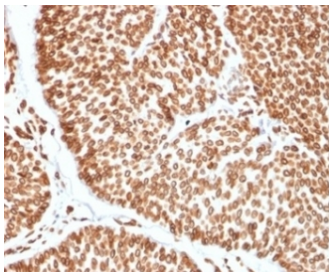
Catalog No.	Formulation	Size
V8990-100UG	0.2 mg/ml in 1X PBS with 0.1 mg/ml BSA (US sourced), 0.05% sodium azide	100 ug
V8990-20UG	0.2 mg/ml in 1X PBS with 0.1 mg/ml BSA (US sourced), 0.05% sodium azide	20 ug
V8990SAF-100UG	1 mg/ml in 1X PBS; BSA free, sodium azide free	100 ug

[Bulk quote request](#)

Availability	1-3 business days
Species Reactivity	Human
Format	Purified
Host	Mouse
Clonality	Monoclonal (mouse origin)
Isotype	Mouse IgG2c, kappa
Clone Name	TCF4/2252
Purity	Protein A/G affinity
UniProt	P15884
Localization	Nucleus, Cytoplasm
Applications	ELISA (For Coating : Order BSA-free Format) : Immunohistochemistry (FFPE) : 1-2ug/ml
Limitations	This TCF4 antibody is available for research use only.



IHC staining of FFPE human breast carcinoma tissue with TCF4 antibody (clone TCF4/2252) at 2ug/ml. HIER: boil tissue sections in pH 9 10mM Tris with 1mM EDTA for 20 min and allow to cool before testing.



IHC staining of FFPE human bladder carcinoma tissue with TCF4 antibody (clone TCF4/2252) at 2ug/ml. HIER: boil tissue sections in pH 9 10mM Tris with 1mM EDTA for 20 min and allow to cool before testing.

Description

Recognizes a protein of 71kDa, identified as Transcription Factor 4 (TCF4). It is a basic helix-loop-helix transcription factor. The encoded protein recognizes an Ephrussi-box () - a motif first identified in immunoglobulin enhancers. This gene is broadly expressed and may play an important role in nervous system development. Defects in this gene are a cause of Pitt-Hopkins syndrome.

Application Notes

Optimal dilution of the TCF4 antibody should be determined by the researcher.

Immunogen

A portion of amino acids 365-671 was used as the immunogen for the TCF4 antibody.

Storage

Aliquot the TCF4 antibody and store frozen at -20oC or colder. Avoid repeated freeze-thaw cycles.