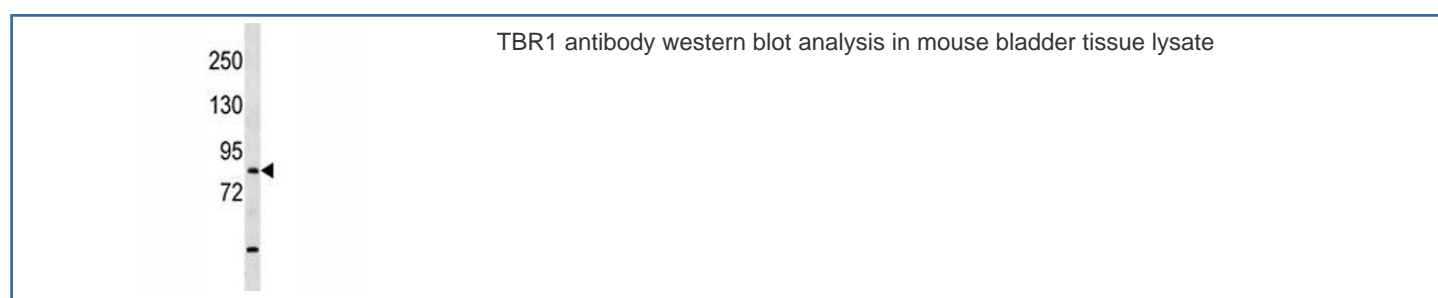


## TBR1 Antibody (F45920)

Catalog No.	Formulation	Size
F45920-0.4ML	In 1X PBS, pH 7.4, with 0.09% sodium azide	0.4 ml
F45920-0.08ML	In 1X PBS, pH 7.4, with 0.09% sodium azide	0.08 ml

[Bulk quote request](#)

<b>Availability</b>	1-3 business days
<b>Species Reactivity</b>	Human, Mouse
<b>Format</b>	Antigen affinity purified
<b>Clonality</b>	Polyclonal (rabbit origin)
<b>Isotype</b>	Rabbit Ig
<b>Purity</b>	Antigen affinity
<b>UniProt</b>	Q16650
<b>Applications</b>	Western Blot : 1:1000
<b>Limitations</b>	This TBR1 antibody is available for research use only.



## Description

This gene is a member of a conserved family of genes that share a common DNA-binding domain, the T-box. T-box genes encode transcription factors involved in the regulation of developmental processes. A similar protein has been disrupted in mice and shown to be critical for early cortical development, and causes loss of projection neurons in the olfactory bulbs and olfactory cortex. The C-terminal region this similar protein was found to be necessary and sufficient for association with the guanylate kinase domain of calcium/calmodulin-dependent serine protein kinase. [provided by RefSeq].

## Application Notes

Titration of the TBR1 antibody may be required due to differences in protocols and secondary/substrate sensitivity.

## **Immunogen**

A portion of amino acids 52-80 from the human protein was used as the immunogen for this TBR1 antibody.

## **Storage**

Aliquot the TBR1 antibody and store frozen at -20oC or colder. Avoid repeated freeze-thaw cycles.