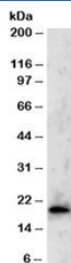


TBPL1 Antibody (R35312)

| Catalog No. | Formulation | Size |
|--------------|---|--------|
| R35312-100UG | 0.5 mg/ml in 1X TBS, pH7.3, with 0.5% BSA (US sourced) and 0.02% sodium azide | 100 ug |

[Bulk quote request](#)

| | |
|----------------------|---|
| Availability | 1-3 business days |
| Species Reactivity | Human |
| Predicted Reactivity | Cow, Dog, Mouse, Rat |
| Format | Antigen affinity purified |
| Host | Goat |
| Clonality | Polyclonal (goat origin) |
| Isotype | Goat Ig |
| Purity | Antigen affinity |
| Gene ID | 9519 |
| Applications | Western Blot : 1-3ug/ml ELISA (peptide) LOD : 1:4000 |
| Limitations | This TBPL1 antibody is available for research use only. |



Western blot testing of Jurkat lysate with TBPL1 antibody at 2ug/ml. Predicted molecular weight: ~20kDa.

Description

Additional name(s) for this target protein: TBP-like 1, TRF2, TATA box binding protein-related factor 2, TLF

Application Notes

Optimal dilution of the TBPL1 antibody should be determined by the researcher.

Immunogen

Amino acids QIYPFVFESRKEIL were used as the immunogen for this TBPL1 antibody.

Storage

Aliquot and store the TBPL1 antibody at -20oC.