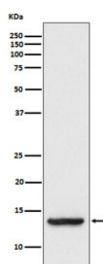


TAX1BP3 Antibody / TIP-1 [clone ADDC-20] (RQ4715)

Catalog No.	Formulation	Size
RQ4715	Antibody in PBS with 0.02% sodium azide, 50% glycerol and 0.4-0.5mg/ml BSA	100 ul

[Bulk quote request](#)

Availability	1-2 weeks
Species Reactivity	Human, Mouse, Rat
Format	Purified
Clonality	Rabbit Monoclonal
Isotype	Rabbit IgG
Clone Name	ADDC-20
Purity	Affinity purified
UniProt	O14907
Applications	Western Blot : 1:500-1:2000
Limitations	This TAX1BP3 antibody is available for research use only.



Western blot testing of human HT-1080 cell lysate with TAX1BP3 antibody. Predicted molecular weight ~14 kDa.

Description

May play a role in the Rho signaling pathway. May act as an inhibitor of the Wnt signaling pathway. May play a role in activation of CDC42 by the viral protein HPV16 E6.

Application Notes

Optimal dilution of the TAX1BP3 antibody should be determined by the researcher.

Immunogen

A synthetic peptide specific to human TAX1BP3 was used as the immunogen for the TAX1BP3 antibody.

Storage

Store the TAX1BP3 antibody at -20oC.