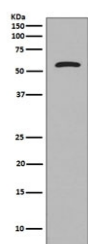


Tau Antibody / MAPT [clone GF-13] (RQ5332)

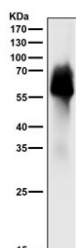
Catalog No.	Formulation	Size
RQ5332	Antibody in PBS with 0.02% sodium azide, 50% glycerol and 0.4-0.5mg/ml BSA	100 ul

[Bulk quote request](#)

Availability	1-2 weeks
Species Reactivity	Human, Mouse
Format	Purified
Clonality	Rabbit Monoclonal
Isotype	Rabbit IgG
Clone Name	GF-13
Purity	Affinity purified
UniProt	P10636
Applications	Western Blot : 1:500-1:2000
Limitations	This Tau antibody is available for research use only.



Western blot testing of human SH-SY5Y cell lysate with Tau antibody. Expected molecular weight: 50-80 kDa.



Western blot testing of mouse brain tissue lysate with Tau antibody. Expected molecular weight: 50-80 kDa.

Description

Tau proteins are proteins that stabilize microtubules. They are abundant in neurons of the central nervous system and are less common elsewhere, but are also expressed at very low levels in CNS astrocytes and oligodendrocytes. Pathologies and dementias of the nervous system such as Alzheimer's disease and Parkinson's disease are associated with tau proteins that have become defective and no longer stabilize microtubules properly. [Wiki]

Application Notes

Optimal dilution of the Tau antibody should be determined by the researcher.

Immunogen

A synthetic peptide specific to human Tau / MAPT was used as the immunogen for the Tau antibody.

Storage

Store the Tau antibody at -20oC.