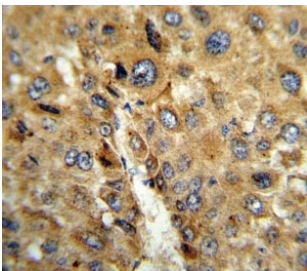


TAT Antibody / Tyrosine aminotransferase (F51774)

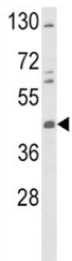
Catalog No.	Formulation	Size
F51774-0.4ML	In 1X PBS, pH 7.4, with 0.09% sodium azide	0.4 ml
F51774-0.08ML	In 1X PBS, pH 7.4, with 0.09% sodium azide	0.08 ml

[Bulk quote request](#)

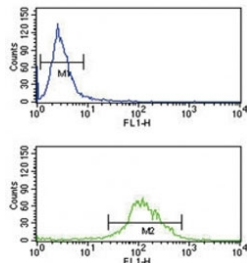
Availability	1-3 business days
Species Reactivity	Human
Predicted Reactivity	Mouse, Rat, Bovine
Format	Antigen affinity purified
Host	Rabbit
Clonality	Polyclonal (rabbit origin)
Isotype	Rabbit Ig
Purity	Antigen affinity
UniProt	P17735
Localization	Cytoplasmic
Applications	Western Blot : 1:1000 IHC (Paraffin) : 1:10-1:50 Flow Cytometry : 1:10-1:50
Limitations	This TAT antibody is available for research use only.



IHC analysis of FFPE human hepatocarcinoma stained with TAT antibody



Western blot analysis of TAT antibody and K562 lysate. Expected molecular weight 45-50 kDa.



TAT antibody flow cytometry analysis of K562 cells (green) compared to a [negative control](#) (blue). FITC-conjugated goat-anti-rabbit secondary Ab was used for the analysis.

Description

TAT is the mitochondrial protein Tyrosine aminotransferase which is present in the liver and catalyzes the conversion of L-tyrosine into p-hydroxyphenylpyruvate.

Application Notes

Titration of the TAT antibody may be required due to differences in protocols and secondary/substrate sensitivity.

Immunogen

A portion of amino acids 279-306 from the human protein was used as the immunogen for this TAT antibody.

Storage

Aliquot the TAT antibody and store frozen at -20°C or colder. Avoid repeated freeze-thaw cycles.