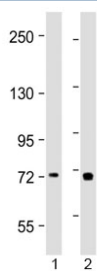


TAP2 Antibody / ABCB3 (N-Terminal Region) (F54197)

Catalog No.	Formulation	Size
F54197-0.2ML	In 1X PBS, pH 7.4, with 0.09% sodium azide	0.2 ml
F54197-0.05ML	In 1X PBS, pH 7.4, with 0.09% sodium azide	0.05 ml

[Bulk quote request](#)

Availability	1-3 business days
Species Reactivity	Human
Format	Antigen affinity purified
Host	Rabbit
Clonality	Polyclonal (rabbit origin)
Isotype	Rabbit Ig
Purity	Antigen affinity
UniProt	Q03519
Applications	Western Blot : 1:1000-1:2000
Limitations	This TAP2 antibody is available for research use only.



Western blot testing of human 1) placenta and 2) Jurkat lysate with TAP2 antibody at 1:2000. Predicted molecular weight ~76 kDa.

Description

Involved in the transport of antigens from the cytoplasm to the endoplasmic reticulum for association with MHC class I molecules. Also acts as a molecular scaffold for the final stage of MHC class I folding, namely the binding of peptide. Nascent MHC class I molecules associate with TAP via tapasin. Inhibited by the covalent attachment of herpes simplex virus ICP47 protein, which blocks the peptide-binding site of TAP. Inhibited by human cytomegalovirus US6 glycoprotein, which binds to the luminal side of the TAP complex and inhibits peptide translocation by specifically blocking ATP-binding to TAP1 and prevents the conformational rearrangement of TAP induced by peptide binding. Inhibited by human adenovirus E3-19K glycoprotein, which binds the TAP complex and acts as a tapasin inhibitor, preventing MHC class

I/TAP association.

Application Notes

The stated application concentrations are suggested starting points. Titration of the TAP2 antibody may be required due to differences in protocols and secondary/substrate sensitivity.

Immunogen

A portion of amino acids 100-134 from human TAP2 was used as the immunogen for the TAP2 antibody.

Storage

Aliquot the TAP2 antibody and store frozen at -20°C or colder. Avoid repeated freeze-thaw cycles.