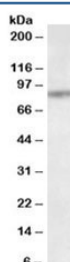


TAP1 Antibody (R35325)

Catalog No.	Formulation	Size
R35325-100UG	0.5 mg/ml in 1X TBS, pH7.3, with 0.5% BSA (US sourced) and 0.02% sodium azide	100 ug

[Bulk quote request](#)

Availability	1-3 business days
Species Reactivity	Human
Format	Antigen affinity purified
Host	Goat
Clonality	Polyclonal (goat origin)
Isotype	Goat Ig
Purity	Antigen affinity
Gene ID	6890
Applications	Western Blot : 1-3ug/ml ELISA (peptide) LOD : 1:32000
Limitations	This TAP1 antibody is available for research use only.



Western blot testing of MCF7 lysate with TAP1 antibody at 1ug/ml. Predicted molecular weight: ~87kDa.

Description

Additional name(s) for this target protein: Transporter 1 ATP-binding cassette sub-family B

Application Notes

Optimal dilution of the TAP1 antibody should be determined by the researcher.

Immunogen

Amino acids QKFREKLQEIKT were used as the immunogen for this TAP1 antibody.

Storage

Aliquot and store the TAP1 antibody at -20oC.