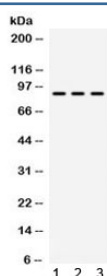


TAP1 Antibody / ABCB2 (R32188)

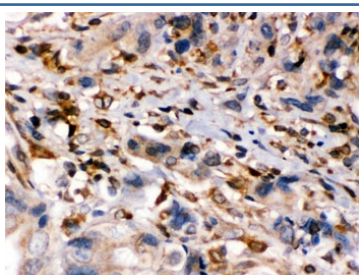
Catalog No.	Formulation	Size
R32188	0.5mg/ml if reconstituted with 0.2ml sterile DI water	100 ug

Bulk quote request

Availability	1-3 business days
Species Reactivity	Human
Format	Antigen affinity purified
Clonality	Polyclonal (rabbit origin)
Isotype	Rabbit IgG
Purity	Antigen affinity
Buffer	Lyophilized from 1X PBS with 2.5% BSA and 0.025% sodium azide
UniProt	Q03518
Localization	Cytoplasmic
Applications	Western Blot : 0.1-0.5ug/ml IHC (FFPE) : 0.5-1ug/ml
Limitations	This TAP1 antibody is available for research use only.



Western blot testing of human 1) HeLa, 2) HUT and 3) SW620 cell lysate with TAP1 antibody. Expected/observed molecular weight ~87 kDa.



IHC testing of FFPE human intestinal cancer tissue with TAP1 antibody. HIER: Boil the paraffin sections in pH 6, 10mM citrate buffer for 20 minutes and allow to cool prior to staining.

Description

Transporter associated with Antigen Processing 1 is a protein that in humans is encoded by the TAP1 gene. The membrane-associated protein encoded by this gene is a member of the superfamily of ATP-binding cassette (ABC) transporters. ABC proteins transport various molecules across extra- and intra-cellular membranes. And ABC genes are divided into seven distinct subfamilies (ABC1, MDR/TAP, MRP, ALD, OABP, GCN20, White). This protein is a member of the MDR/TAP subfamily. Members of the MDR/TAP subfamily are involved in multidrug resistance. The protein encoded by this gene is involved in the pumping of degraded cytosolic peptides across the endoplasmic reticulum into the membrane-bound compartment where class I molecules assemble. Mutations in this gene may be associated with ankylosing spondylitis, insulin-dependent diabetes mellitus, and celiac disease. Two transcript variants encoding different isoforms have been found for this gene.

Application Notes

Optimal dilution of the TAP1 antibody should be determined by the researcher.

Immunogen

Amino acids RSFANEEGEAQKFREKLQEIKTLNQKEAVAYAVN of human TAP1 were used as the immunogen for the TAP1 antibody.

Storage

After reconstitution, the TAP1 antibody can be stored for up to one month at 4oC. For long-term, aliquot and store at -20oC. Avoid repeated freezing and thawing.