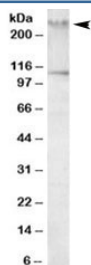


## Talin 1 Antibody (R35233)

Catalog No.	Formulation	Size
R35233-100UG	0.5 mg/ml in 1X TBS, pH7.3, with 0.5% BSA (US sourced) and 0.02% sodium azide	100 ug

[Bulk quote request](#)

Availability	1-3 business days
Species Reactivity	Human
Predicted Reactivity	Cow, Dog, Mouse, Rat
Format	Antigen affinity purified
Host	Goat
Clonality	Polyclonal (goat origin)
Isotype	Goat Ig
Purity	Antigen affinity
Gene ID	7094
Applications	Western Blot : 1-3ug/ml ELISA (peptide) LOD : 1:8000
Limitations	This Talin 1 antibody is available for research use only.



Western blot testing of human peripheral mononucleocytes lysate with Talin 1 antibody at 1ug/ml. The expected ~275kDa band and the additional ~110kDa band are blocked by the immunizing peptide.

### Description

Additional name(s) for this target protein: TLN, TLN1

### Application Notes

Optimal dilution of the Talin 1 antibody should be determined by the researcher.

1. This Talin 1 antibody does not cross react with the highly homologous protein Talin 2.

## **Immunogen**

Amino acids QEALHTQMLTAVQE were used as the immunogen for this Talin 1 antibody.

## **Storage**

Aliquot and store the Talin 1 antibody at -20oC.