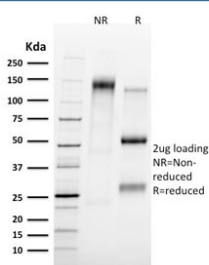


TAL1 Antibody / T-cell acute lymphocytic leukemia protein 1 [clone TAL1/2707] (V8107)

Catalog No.	Formulation	Size
V8107-100UG	0.2 mg/ml in 1X PBS with 0.1 mg/ml BSA (US sourced) and 0.05% sodium azide	100 ug
V8107-20UG	0.2 mg/ml in 1X PBS with 0.1 mg/ml BSA (US sourced) and 0.05% sodium azide	20 ug
V8107SAF-100UG	1 mg/ml in 1X PBS; BSA free, sodium azide free	100 ug

[Bulk quote request](#)

Availability	1-3 business days
Species Reactivity	Human
Format	Purified
Host	Mouse
Clonality	Monoclonal (mouse origin)
Isotype	Mouse IgG2a, kappa
Clone Name	TAL1/2707
Purity	Protein G affinity chromatography
UniProt	P17542
Applications	ELISA (order BSA-free Format For Coating) :
Limitations	This TAL1 antibody is available for research use only.



SDS-PAGE analysis of purified, BSA-free TAL1 antibody (clone TAL1/2707) as confirmation of integrity and purity.

Description

Activation of TAL1 characterizes up to 60% of cases of human T cell acute lymphoblastic leukemia, making it the most

frequent gain-of-function mutation observed in this disorder. TAL1 (also designated SCL) is a serine phosphoprotein and basic helix-loop-helix transcription factor known to regulate embryonic hematopoiesis. This transcription factor binds as a heterodimer with E2A and HEB/HTF4 to a nucleotide sequence motif termed the E-box. In addition, leukemogenesis is accelerated dramatically by transgenic co-expression of TAL1 and the catalytic subunit of casein kinase IIHLH transcription factors.

Application Notes

Optimal dilution of the TAL1 antibody should be determined by the researcher.

Immunogen

A recombinant human full-length TAL1 protein was used as the immunogen for the TAL1 antibody.

Storage

Store the TAL1 antibody at 2-8oC (with azide) or aliquot and store at -20oC or colder (without azide).