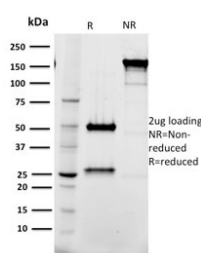


TAL1 Antibody / T-cell acute lymphocytic leukemia protein 1 [clone BTL73] (V8109)

| Catalog No. | Formulation | Size |
|----------------|--|--------|
| V8109-100UG | 0.2 mg/ml in 1X PBS with 0.1 mg/ml BSA (US sourced) and 0.05% sodium azide | 100 ug |
| V8109-20UG | 0.2 mg/ml in 1X PBS with 0.1 mg/ml BSA (US sourced) and 0.05% sodium azide | 20 ug |
| V8109SAF-100UG | 1 mg/ml in 1X PBS; BSA free, sodium azide free | 100 ug |

[Bulk quote request](#)

| | |
|---------------------------|--|
| Availability | 1-3 business days |
| Species Reactivity | Human |
| Format | Purified |
| Host | Mouse |
| Clonality | Monoclonal (mouse origin) |
| Isotype | Mouse IgG1, kappa |
| Clone Name | BTL73 |
| Purity | Protein G affinity chromatography |
| UniProt | P17542 |
| Applications | Western Blot : 1-2ug/ml |
| Limitations | This TAL1 antibody is available for research use only. |



SDS-PAGE analysis of purified, BSA-free TAL1 antibody (clone BTL73) as confirmation of integrity and purity.

Description

Activation of TAL1 characterizes up to 60% of cases of human T cell acute lymphoblastic leukemia, making it the most

frequent gain-of-function mutation observed in this disorder. TAL1 (also designated SCL) is a serine phosphoprotein and basic helix-loop-helix transcription factor known to regulate embryonic hematopoiesis. This transcription factor binds as a heterodimer with E2A and HEB/HTF4 to a nucleotide sequence motif termed the E-box. In addition, leukemogenesis is accelerated dramatically by transgenic co-expression of TAL1 and the catalytic subunit of casein kinase IIHLH transcription factors.

Application Notes

Optimal dilution of the TAL1 antibody should be determined by the researcher.

Immunogen

A recombinant human full-length TAL1 protein was used as the immunogen for the TAL1 antibody.

Storage

Store the TAL1 antibody at 2-8oC (with azide) or aliquot and store at -20oC or colder (without azide).