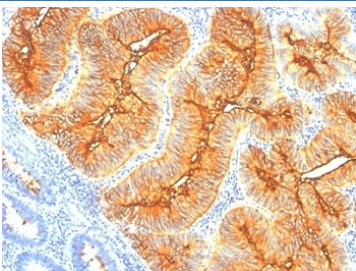


## TAG-72 Antibody [clone SPM148] (V9013)

Catalog No.	Formulation	Size
V9013-100UG	0.2 mg/ml in 1X PBS with 0.1 mg/ml BSA (US sourced) and 0.05% sodium azide	100 ug
V9013-20UG	0.2 mg/ml in 1X PBS with 0.1 mg/ml BSA (US sourced) and 0.05% sodium azide	20 ug
V9013SAF-100UG	1 mg/ml in 1X PBS; BSA free, sodium azide free	100 ug
V9013IHC-7ML	Prediluted in 1X PBS with 0.1 mg/ml BSA (US sourced) and 0.05% sodium azide; *For IHC use only*	7 ml

### Bulk quote request

<b>Availability</b>	1-3 business days
<b>Species Reactivity</b>	Human
<b>Format</b>	Purified
<b>Host</b>	Mouse
<b>Clonality</b>	Monoclonal (mouse origin)
<b>Isotype</b>	Mouse IgG1, kappa
<b>Clone Name</b>	SPM148
<b>Purity</b>	Protein G affinity chromatography
<b>UniProt</b>	Not Known
<b>Localization</b>	Cytoplasmic and cell surface
<b>Applications</b>	Immunohistochemistry (FFPE) : 1-2ug/ml for 30 min at RT
<b>Limitations</b>	This TAG-72 antibody is available for research use only.



IHC: Formalin-fixed, paraffin-embedded human colon carcinoma stained with TAG-72 antibody (clone SPM148).

## Description

Recognizes an oncofetal antigen of 220kDa, identified as a Tumor-associated glycoprotein (TAG-72) with properties of a mucin. This mAb defines the mucin-carried sialylated-Tn epitope. TAG72 is usually expressed by adenocarcinomas, but is negative in mesotheliomas. Studies have reported that this antibody has 80% sensitivity and 93% specificity for pulmonary adenocarcinoma. Therefore, TAG72 is a useful marker to distinguish between mesothelioma and adenocarcinoma. However, false positive reactions can occur so results must be interpreted with the utmost caution. This antibody may be useful in the differentiation of non-small cell carcinomas from small cell carcinomas of the lung. The combined use of anti-TAG72 and anti-GCDFP-15 is valuable in the diagnosis of apocrine carcinoma.

Explore our [TAG-72 Antibody - Tumor Associated Glycoprotein and Carcinoma Marker](#) page for a broader view of TAG-72 expression across epithelial cancers and tumor-associated glycosylation patterns.

## Application Notes

The optimal dilution of the TAG-72 antibody for each application should be determined by the researcher.

1. Staining of formalin-fixed tissues requires boiling tissue sections in pH 9 10mM Tris with 1mM EDTA for 10-20 min followed by cooling at RT for 20 minutes.
2. The prediluted format is supplied in a dropper bottle and is optimized for use in IHC. After epitope retrieval step (if required), drip mAb solution onto the tissue section and incubate at RT for 30 min.

## Immunogen

A membrane-enriched fraction of a human breast carcinoma liver metastasis was used as the immunogen for this TAG-72 antibody.

## Storage

Store the TAG-72 antibody at 2-8oC (with azide) or aliquot and store at -20oC or colder (without azide).