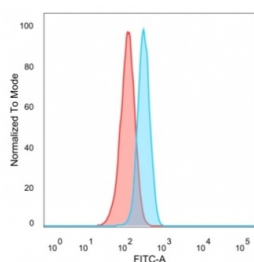


TADA1 Antibody / STAF42 [clone PCRP-TADA1-1C9] (V9607)

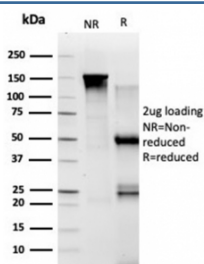
Catalog No.	Formulation	Size
V9607-100UG	0.2 mg/ml in 1X PBS with 0.1 mg/ml BSA (US sourced), 0.05% sodium azide	100 ug
V9607-20UG	0.2 mg/ml in 1X PBS with 0.1 mg/ml BSA (US sourced), 0.05% sodium azide	20 ug
V9607SAF-100UG	1 mg/ml in 1X PBS; BSA free, sodium azide free	100 ug

[Bulk quote request](#)

Availability	1-3 business days
Species Reactivity	Human
Format	Purified
Host	Mouse
Clonality	Monoclonal (mouse origin)
Isotype	Mouse IgG2b
Clone Name	PCRP-TADA1-1C9
Purity	Protein A/G affinity
UniProt	Q96BN2
Localization	Nucleus
Applications	Western Blot : 1-2ug/ml Flow Cytometry : 1-2ug/million cells
Limitations	This TADA1 antibody is available for research use only.

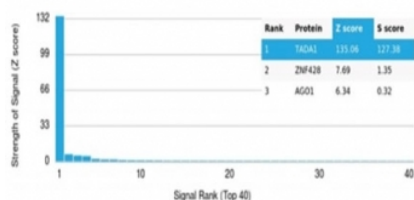


FACS staining of PFA-fixed human HeLa cells with TADA1 antibody (blue, clone PCRP-TADA1-1C9), and unstained cells (red).



SDS-PAGE analysis of purified, BSA-free TADA1 antibody (clone PCRP-TADA1-1C9) as confirmation of integrity and purity.

Human Protein Microarray Specificity Validation



Analysis of HuProt(TM) microarray containing more than 19,000 full-length human proteins using TADA1 antibody (clone PCRP-TADA1-1C9). These results demonstrate the foremost specificity of the PCRP-TADA1-1C9 mAb. Z- and S- score: The Z-score represents the strength of a signal that an antibody (in combination with a fluorescently-tagged anti-IgG secondary Ab) produces when binding to a particular protein on the HuProt(TM) array. Z-scores are described in units of standard deviations (SD's) above the mean value of all signals generated on that array. If the targets on the HuProt(TM) are arranged in descending order of the Z-score, the S-score is the difference (also in units of SD's) between the Z-scores. The S-score therefore represents the relative target specificity of an Ab to its intended target.

Description

STAF42 (SPT3-associated factor 42), also known as TADA1 (transcriptional adapter 1), ADA1, HFI1 or hADA1, is a 335 amino acid nuclear protein that belongs to the TADA1 family. As a component of the STAGA transcription coactivator-HAT complex, STAF42 is most likely involved in transcriptional regulation. The gene that encodes STAF42 maps to human chromosome 1, which spans 260 million base pairs, contains over 3,000 genes and comprises nearly 8% of the human genome. Chromosome 1 houses a large number of disease associated genes, including those that are involved in familial adenomatous polyposis, Stickler syndrome, Parkinson s disease, Gaucher disease, schizophrenia and Usher syndrome. Aberrations in chromosome 1 are found in a variety of cancers, including head and neck cancer, malignant melanoma and multiple myeloma.

Application Notes

Optimal dilution of the TADA1 antibody should be determined by the researcher.

Immunogen

Recombinant full-length human protein was used as the immunogen for the TADA1 antibody.

Storage

Aliquot the TADA1 antibody and store frozen at -20oC or colder. Avoid repeated freeze-thaw cycles.