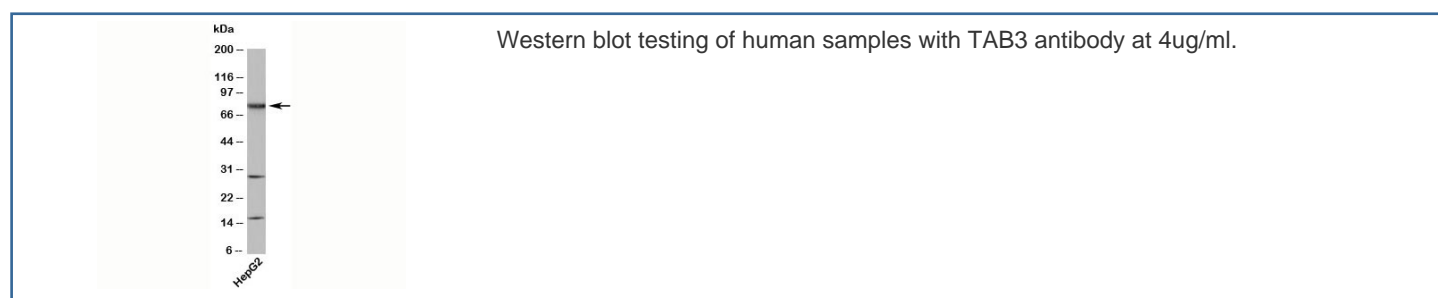


TAB3 Antibody (N1201)

Catalog No.	Formulation	Size
N1201-100UG	0.5 mg/ml in 1X PBS with 0.1 mg/ml BSA (US sourced), 0.05% sodium azide	100 ug
N1201-25UG	0.5 mg/ml in 1X PBS with 0.1 mg/ml BSA (US sourced), 0.05% sodium azide	25 ug

[Bulk quote request](#)

Species Reactivity	Human, Mouse
Format	Purified
Clonality	Polyclonal (rabbit origin)
Isotype	Rabbit IgG
Purity	Protein A purified antibody
Buffer	1X PBS, pH 7.4
Gene ID	257397
Applications	Western Blot : 4-8ug/ml
Limitations	This TAB3 antibody is available for research use only.



Description

TAB3, a TAB2-like protein, is a mediator of TAK1 activation in IL-1 and TNF signaling. IL-1 and TNF are cytokines involved in the inflammation process, initiating signaling cascades leading to the activation of NF- κ B and mitogen-activated protein kinases (MAPKs). TAB3 functions as an adapter, linking TAK1 and TRAF6 or TRAF2. This kinase complex phosphorylates I κ B, which keeps NF- κ B inactive and sequestered in the cytoplasm. Phosphorylation leads to I κ B degradation, activating NF- κ B, which translocates to the nucleus, binds to DNA response elements and can begin multiple signaling cascades.

Application Notes

Provided assay concentrations are suggestions only, antibody titration may be required for optimal results.

Immunogen

A recombinant protein fragment from the N-terminal region of human TAB3 was used as the immunogen for this antibody.

Storage

Aliquot the TAB3 antibody and store frozen at -20oC or colder. Avoid repeated freeze-thaw cycles.

Alternate Names

TGF-beta-activated kinase 1-binding protein 3, MAP3K7IP3, NAP1