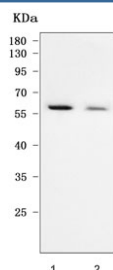


TAB1 Antibody / TAK1-binding protein 1 / MAP3K7IP1 (RQ7779)

Catalog No.	Formulation	Size
RQ7779	0.5mg/ml if reconstituted with 0.2ml sterile DI water	100 ug

Bulk quote request

Availability	1-3 business days
Species Reactivity	Human
Format	Antigen affinity purified
Clonality	Polyclonal (rabbit origin)
Isotype	Rabbit IgG
Purity	Antigen affinity purified
Buffer	Lyophilized from 1X PBS with 2% Trehalose
UniProt	Q15750
Applications	Western Blot : 0.5-1ug/ml Direct ELISA : 0.1-0.5ug/ml
Limitations	This TAB1 antibody is available for research use only.



Western blot testing of human 1) 293T and 2) HeLa cell lysate with TAB1 antibody.
Predicted molecular weight ~55 kDa.

Description

Mitogen-activated protein kinase kinase kinase 7-interacting protein 1, also called TAB1, is an enzyme that in humans is encoded by the MAP3K7IP1 gene. It is mapped to 22q13.1. The protein encoded by this gene was identified as a regulator of the MAP kinase kinase kinase MAP3K7/TAK1, which is known to mediate various intracellular signaling pathways. This protein can interact with and activate the mitogen-activated protein kinase 14 (MAPK14/p38alpha), and thus represents an alternative activation pathway, in addition to the MAPKK pathways, which contributes to the biological responses of MAPK14 to various stimuli. TAB1 also can activate the kinase activity of TAK1 by direct interaction, and it may be an important signaling intermediate between TGFB receptors and TAK1. What's more, TAB1 plays an important

role in skin homeostasis, wound repair, and oncogenesis.

Application Notes

Optimal dilution of the TAB1 antibody should be determined by the researcher.

Immunogen

E. coli-derived recombinant human protein (amino acids R5-A329) was used as the immunogen for the TAB1 antibody.

Storage

After reconstitution, the TAB1 antibody can be stored for up to one month at 4°C. For long-term, aliquot and store at -20°C. Avoid repeated freezing and thawing.