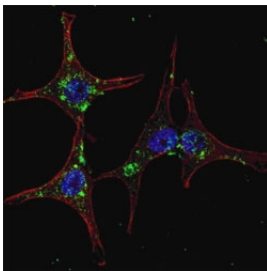


SYVN1 Antibody (HRD1) (F40119)

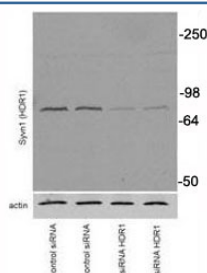
Catalog No.	Formulation	Size
F40119-0.4ML	In 1X PBS, pH 7.4, with 0.09% sodium azide	0.4 ml
F40119-0.08ML	In 1X PBS, pH 7.4, with 0.09% sodium azide	0.08 ml

[Bulk quote request](#)

Availability	1-3 business days
Species Reactivity	Human, Mouse
Format	Purified
Host	Rabbit
Clonality	Polyclonal (rabbit origin)
Isotype	Rabbit Ig
Purity	Purified
UniProt	Q86TM6
Applications	Western Blot : 1:200-1000 IHC (Paraffin) : 1:50-1:100
Limitations	This SYVN1 antibody is available for research use only.



Fluorescent confocal image of HeLa cells stained with SYVN1 antibody. Primary Ab (1:200, 2 h at room temperature); Alexa Fluor 488 conjugated donkey anti-rabbit Ab (green) was used as secondary (1:1000, 1h). Nuclei were counterstained with Hoechst 33342 (blue) (10 ug/ml, 5 min).



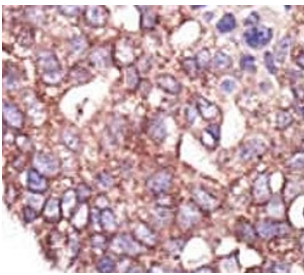
Western blot testing of SYVN1 antibody and transiently transfected Neuro2A cells. Predicted molecular weight: ~68kDa.

130
72
55
36
28
17

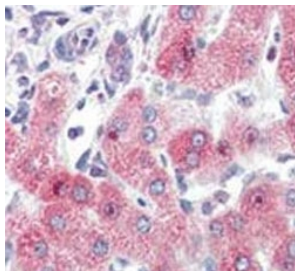
Western blot analysis of SYVN1 antibody in T47D lysate. Predicted molecular weight:
~68kDa.

250
150
100
75
50
37
25

Western blot analysis of SYVN1 mouse kidney tissue lysate. Predicted molecular weight:
~68kDa.



IHC analysis of FFPE human breast carcinoma tissue stained with the SYVN1 antibody



IHC analysis of FFPE human liver tissue stained with SYVN1 antibody

Description

HRD1/SYVN1 is a ubiquitin ligase whose expression is induced by the unfolded protein response (UPR) following endoplasmic reticulum stress. Expression of SYVN1 protects cells from apoptosis by inducing degradation of abnormally processed proteins that accumulate in the endoplasmic reticulum. It is expressed in many tissues, strongly expressed in brain, pancreas, liver, kidney and skeletal muscle. Amano T, et al. reported that Synoviolin/Hrd1 (expressed in rheumatoid synovium) is a novel causative factor for arthropathy by triggering synovial cell outgrowth through its antiapoptotic effects.

Application Notes

Titration of the SYVN1 antibody may be required due to differences in protocols and secondary/substrate sensitivity.

Immunogen

A portion of amino acids 586-617 from the human protein was used as the immunogen for this SYVN1 antibody.

Storage

Aliquot the SYVN1 antibody and store frozen at -20oC or colder. Avoid repeated freeze-thaw cycles.

