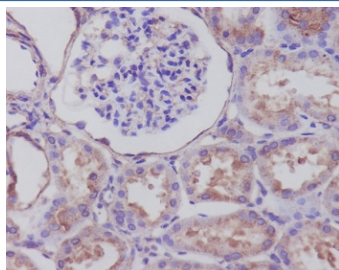


## SYP Antibody / Synaptophysin [clone BIE-19] (RQ5211)

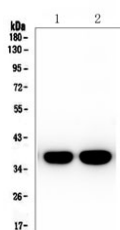
Catalog No.	Formulation	Size
RQ5211	Antibody in PBS with 0.02% sodium azide, 50% glycerol and 0.4-0.5mg/ml BSA	100 ul

[Bulk quote request](#)

Availability	1-2 weeks
Species Reactivity	Human, Mouse, Rat
Format	Purified
Host	Rabbit
Clonality	Rabbit Monoclonal
Isotype	Rabbit IgG
Clone Name	BIE-19
Purity	Affinity purified
UniProt	P08247
Applications	Western Blot : 1:500-1:2000 Immunohistochemistry (FFPE) : 1:50-1:200
Limitations	This SYP antibody is available for research use only.



IHC staining of FFPE human kidney tissue with SYP antibody. HIER: boil tissue sections in pH6, 10mM citrate buffer, for 10-20 min and allow to cool before testing.



Western blot testing of 1) rat brain and 2) mouse brain lysate with SYP antibody. Predicted molecular weight: 34-38 kDa.

## Description

The SYP gene encodes an integral membrane protein of small synaptic vesicles in brain and endocrine cells. The protein also binds cholesterol and is thought to direct targeting of vesicle-associated membrane protein 2 (synaptobrevin) to intracellular compartments. Mutations in this gene are associated with an X-linked form of cognitive disability. [RefSeq]

## Application Notes

Optimal dilution of the SYP antibody should be determined by the researcher.

## Immunogen

A synthetic peptide specific to human Synaptophysin / SYP was used as the immunogen for the SYP antibody.

## Storage

Store the SYP antibody at -20oC.