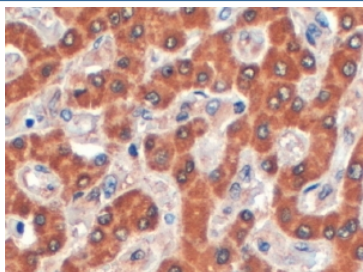


Syntenin 2 Antibody (R34727)

Catalog No.	Formulation	Size
R34727-100UG	0.5 mg/ml in 1X TBS, pH7.3, with 0.5% BSA (US sourced) and 0.02% sodium azide	100 ug

[Bulk quote request](#)

Availability	1-3 business days
Species Reactivity	Human
Predicted Reactivity	Mouse, Rat
Format	Antigen affinity purified
Host	Goat
Clonality	Polyclonal (goat origin)
Isotype	Goat Ig
Purity	Antigen affinity
Gene ID	27111
Applications	Immunohistochemistry (FFPE) : 4-6ug/ml ELISA (peptide) LOD : 1:16000
Limitations	This Syntenin 2 antibody is available for research use only.



IHC testing of FFPE human liver with Syntenin 2 antibody at 4ug/ml. HIER: steamed with pH6 citrate buffer, HRP-staining.

Description

Additional name(s) for this target protein: SDCBP2

Application Notes

Optimal dilution of the Syntenin 2 antibody should be determined by the researcher.

Immunogen

Amino acids LLHHTMDHSIPDA were used as the immunogen for this Syntenin 2 antibody.

Storage

Aliquot and store the Syntenin 2 antibody at -20oC.