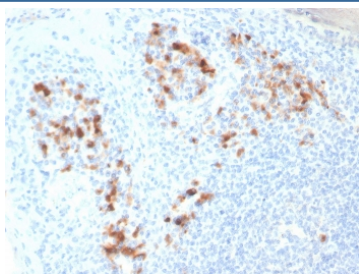


Syndecan-1 Antibody / CD138 / SDC1 [clone SDC1/7182] (V4898)

Catalog No.	Formulation	Size
V4898-100UG	0.2 mg/ml in 1X PBS with 0.1 mg/ml BSA (US sourced), 0.05% sodium azide	100 ug
V4898-20UG	0.2 mg/ml in 1X PBS with 0.1 mg/ml BSA (US sourced), 0.05% sodium azide	20 ug
V4898SAF-100UG	1 mg/ml in 1X PBS; BSA free, sodium azide free	100 ug

[Bulk quote request](#)

Availability	1-3 business days
Species Reactivity	Human
Format	Purified
Host	Mouse
Clonality	Monoclonal (mouse origin)
Isotype	Mouse IgG1, kappa
Clone Name	SDC1/7182
Purity	Protein A/G affinity
UniProt	P18827
Localization	Cell surface
Applications	Immunohistochemistry (FFPE) : 1-2ug/ml for 30 min at RT
Limitations	This Syndecan-1 antibody is available for research use only.



IHC staining of FFPE human tonsil tissue with Syndecan-1 antibody (clone SDC1/7182).
HIER: boil tissue sections in pH 9 10mM Tris with 1mM EDTA for 20 min and allow to cool before testing.

Description

CD138, also designated syndecan-1, is a member of the syndecan family of four transmembrane spanning proteins capable of binding to heparan sulfate and chondroitin sulfate molecules. The syndecans main functions are to control cell

growth and differentiation as well as to maintain cell adhesion and cell migration. Under normal conditions CD138 is predominantly expressed on mature plasma cells and early preB-cells, while other haematolymphoid cells are negative. Various types of epithelial cells are also CD138 positive. Squamous epithelial cells show strong membranous and some cytoplasmic staining, except for the mature superficial squamous epithelial cells which are unstained. Mature mesenchymal and neural tissues are not stained. Among haematolymphoid neoplasms, CD138 is expressed in practically all cases of plasma cell malignancies. Among non-haematolymphoid neoplasms the expression of CD138 is found in various types of carcinomas.

Application Notes

Optimal dilution of the Syndecan-1 antibody should be determined by the researcher.

Immunogen

A recombinant partial protein sequence (within amino acids 1-250) from the human protein was used as the immunogen for the Syndecan-1 antibody.

Storage

Aliquot the Syndecan-1 antibody and store frozen at -20oC or colder. Avoid repeated freeze-thaw cycles.