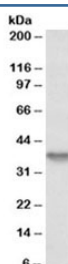


Syndecan-1 Antibody / CD138 (R35598)

Catalog No.	Formulation	Size
R35598-100UG	0.5 mg/ml in 1X TBS, pH7.3, with 0.5% BSA (US sourced) and 0.02% sodium azide	100 ug

[Bulk quote request](#)

Availability	1-3 business days
Species Reactivity	Human
Format	Antigen affinity purified
Clonality	Polyclonal (goat origin)
Isotype	Goat Ig
Purity	Antigen affinity
Gene ID	6382
Applications	Western Blot : 1-3ug/ml ELISA (peptide) LOD : 1:2000
Limitations	This Syndecan 1 antibody is available for research use only.



Western blot testing of HepG2 lysate with Syndecan 1 antibody at 1ug/ml. Expected molecular weight: 32-95 kDa depending on glycosylation level.

Description

Additional name(s) for this target protein: Syndecan, SDC, SDC1, CD138

Application Notes

Optimal dilution of the Syndecan 1 antibody should be determined by the researcher.

Immunogen

Amino acids REQEATPRPRETTQ were used as the immunogen for this Syndecan 1 antibody.

Storage

Aliquot and store the Syndecan 1 antibody at -20oC.