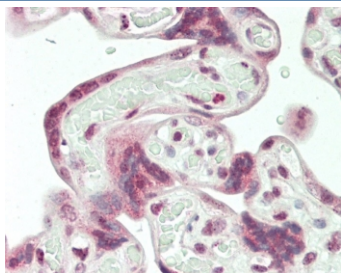


Syncytin 1 Antibody / ERVW-1 (F55080)

Catalog No.	Formulation	Size
F55080-0.2ML	In 1X PBS, pH 7.4, with 0.09% sodium azide	0.2 ml
F55080-0.05ML	In 1X PBS, pH 7.4, with 0.09% sodium azide	0.05 ml

[Bulk quote request](#)

Availability	1-2 business days
Species Reactivity	Human
Format	Purified
Host	Rabbit
Clonality	Polyclonal (rabbit origin)
Isotype	Rabbit Ig
UniProt	Q9UQF0
Applications	Western Blot : 1:500-1:1000 Immunohistochemistry (FFPE) : 1:50-1:100
Limitations	This Syncytin 1 antibody is available for research use only.



IHC staining of FFPE human placental tissue with Syncytin 1 antibody. HIER: steam section in pH6 citrate buffer for 20 min and allow to cool prior to staining.



Western blot testing of human brain tissue lysate with Syncytin 1 antibody. Predicted molecular weight: 60~80 kDa depending on glycosylation level.

Description

Syncytin 1 is a protein encoded by the ERVW-1 gene, which belongs to the human endogenous retrovirus W family. Endogenous retroviruses are remnants of ancient viral infections that have inserted their genetic material into the human genome. These genetic elements have been preserved through generations and have been co-opted by our bodies for various functions. One of the most intriguing functions of Syncytin 1 is its role in placental development. During pregnancy, Syncytin 1 is expressed in the trophoblast cells of the placenta, where it helps in the formation of syncytia - multinucleated cells that facilitate nutrient exchange between the mother and the growing fetus. This process is essential for the successful progression of pregnancy and the health of both the mother and the baby. Recent research has pointed to its involvement in various physiological processes, including immune modulation and tissue repair. Its expression has been detected in the brain, where it may play a role in neuroprotection and synaptic plasticity.

Application Notes

Titration of the Syncytin 1 antibody may be required due to differences in protocols and secondary/substrate sensitivity.

Immunogen

A portion of amino acids 400-429 from the human protein was used as the immunogen for this Syncytin 1 antibody.

Storage

Aliquot the Syncytin 1 antibody and store frozen at -20oC or colder. Avoid repeated freeze-thaw cycles.