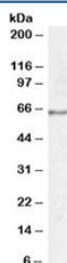


Synaptotagmin 1 Antibody / SYT1 (R35563)

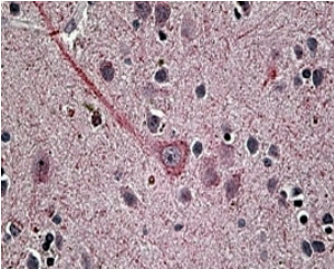
Catalog No.	Formulation	Size
R35563-100UG	0.5 mg/ml in 1X TBS, pH7.3, with 0.5% BSA (US sourced) and 0.02% sodium azide	100 ug

[Bulk quote request](#)

Availability	1-3 business days
Species Reactivity	Human
Predicted Reactivity	Mouse, Rat, Dog, Cow
Format	Antigen affinity purified
Host	Goat
Clonality	Polyclonal (goat origin)
Isotype	Goat Ig
Purity	Antigen affinity
Gene ID	6857
Applications	Western Blot : 1-3ug/ml Immunohistochemistry (FFPE) : 4-6ug/ml ELISA (peptide) LOD : 1:2000
Limitations	This Synaptotagmin 1 antibody is available for research use only.



Western blot testing of human hippocampus lysate with Synaptotagmin 1 antibody at 1ug/ml. Predicted molecular weight: ~48/65kDa (unmodified/glycosylated).



IHC staining of FFPE human brain with Synaptotagmin 1 antibody at 4ug/ml. HIER: steamed with pH6 citrate buffer, AP-staining.

Description

Additional name(s) for this target protein: Synaptotagmin I, SYT

Application Notes

Optimal dilution of the Synaptotagmin 1 antibody should be determined by the researcher.

Immunogen

Amino acids RDLQSAEKEEQEK were used as the immunogen for this Synaptotagmin 1 antibody.

Storage

Aliquot and store the Synaptotagmin 1 antibody at -20oC.

References (1)