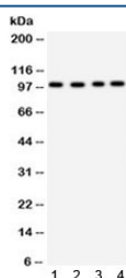


## Synaptopodin Antibody / SYNPO (R32281)

Catalog No.	Formulation	Size
R32281	0.5mg/ml if reconstituted with 0.2ml sterile DI water	100 ug

**Bulk quote request**

<b>Availability</b>	1-3 business days
<b>Species Reactivity</b>	Human, Mouse
<b>Format</b>	Antigen affinity purified
<b>Clonality</b>	Polyclonal (rabbit origin)
<b>Isotype</b>	Rabbit IgG
<b>Purity</b>	Antigen affinity
<b>Buffer</b>	Lyophilized from 1X PBS with 2.5% BSA and 0.025% sodium azide
<b>UniProt</b>	Q8N3V7
<b>Applications</b>	Western Blot : 0.1-0.5ug/ml
<b>Limitations</b>	This Synaptopodin antibody is available for research use only.



Western blot testing of 1) mouse brain, 2) U87, 3) HepG2 and 4) 293 lysate with Synaptopodin antibody. Expected/observed molecular weight ~99 kDa.

## Description

Synaptopodin is an actin-associated protein that may play a role in modulating actin-based shape and motility of dendritic spines and renal podocyte foot processes. Seems to be essential for the formation of spine apparatuses in spines of telencephalic neurons, which is involved in synaptic plasticity (By similarity). [UniProt]

## Application Notes

Optimal dilution of the Synaptopodin antibody should be determined by the researcher.

## Immunogen

Amino acids EKPKVTPNPDLLDLVQTADKRRQRDQGEV of human Synaptopodin were used as the immunogen for the Synaptopodin antibody.

## Storage

After reconstitution, the Synaptopodin antibody can be stored for up to one month at 4°C. For long-term, aliquot and store at -20°C. Avoid repeated freezing and thawing.