

Synaptophysin Antibody [clone SVP-38] (R30080)

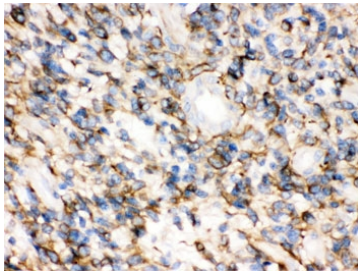
Catalog No.	Formulation	Size
R30080	0.5mg/ml with 1% BSA and 0.01% sodium azide if reconstituted with 0.2ml sterile 1X PBS	100 ug

[Bulk quote request](#)

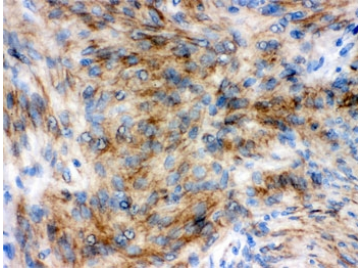
Availability	1-3 business days
Species Reactivity	Human, Rat
Format	Ascites
Host	Mouse
Clonality	Monoclonal (mouse origin)
Isotype	Mouse IgG1
Clone Name	SVP-38
Purity	Unpurified ascites
Gene ID	6855
Localization	Cytoplasmic, membranous
Applications	Western Blot : 0.5-1ug/ml IHC (FFPE) : 1-2ug/ml IHC (Frozen) : 1-2ug/ml Formalin Or Acetone Fixed Tissues :
Limitations	This Synaptophysin antibody is available for research use only.



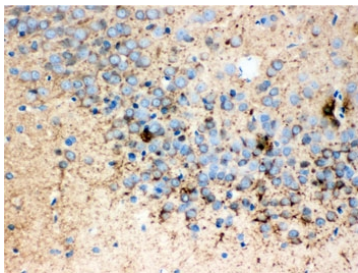
Western blot testing of Synaptophysin antibody and rat brain tissue lysate. Predicted molecular weight: 34-38 kDa.



IHC testing of FFPE human glioma tissue with Synaptophysin antibody. HIER: Boil the paraffin sections in pH 6, 10mM citrate buffer for 20 minutes and allow to cool prior to testing.



IHC testing of FFPE human meningioma tissue with Synaptophysin antibody. HIER: Boil the paraffin sections in pH 6, 10mM citrate buffer for 20 minutes and allow to cool prior to testing.



IHC testing of FFPE rat brain with Synaptophysin antibody. HIER: Boil the paraffin sections in pH 6, 10mM citrate buffer for 20 minutes and allow to cool prior to testing.

Description

Synaptophysin (SYP) is an integral membrane protein of small synaptic vesicles in brain and endocrine cells. Ozcelik et al.(1990) concluded that the gene has 7 exons distributed over about 20 kb. The SYP locus mapped to Xp11.23-p11.22. Regionalization of the gene on the X chromosome was also done with hamster/human hybrid cells in which various portions of the human X chromosome were present.

Application Notes

The stated application concentrations are suggested starting points. Titration of the Synaptophysin antibody may be required due to differences in protocols and secondary/substrate sensitivity.

Immunogen

Rat retina synaptosome was used as the immunogen for this Synaptophysin antibody.

Storage

After reconstitution, the Synaptophysin antibody can be stored for up to one month at 4oC. For long-term, aliquot and store at -20oC. Avoid repeated freezing and thawing.

