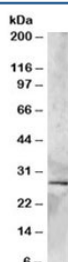


## SYF2 Antibody (R33118)

Catalog No.	Formulation	Size
R33118-100UG	0.5 mg/ml in 1X TBS, pH7.3, with 0.5% BSA (US sourced) and 0.02% sodium azide	100 ug

[Bulk quote request](#)

Availability	1-3 business days
Species Reactivity	Human, Mouse
Predicted Reactivity	Cow, Dog, Rat
Format	Antigen affinity purified
Clonality	Polyclonal (goat origin)
Isotype	Goat Ig
Purity	Antigen affinity
Gene ID	25949
Applications	Western Blot : 0.5-3ug/ml ELISA (peptide) LOD : 1:8000
Limitations	This SYF2 antibody is available for research use only.



Western blot testing of human heart lysate with SYF2 antibody at 2ug/ml. Predicted molecular weight: ~28kDa, routinely observed at ~29kDa.

## Description

Additional name(s) for this target protein: GCIP-interacting protein p29

## Application Notes

Optimal dilution of the SYF2 antibody should be determined by the researcher.

## Immunogen

Amino acids AEIKQNLERGTAV were used as the immunogen for this SYF2 antibody.

## **Storage**

Aliquot and store the SYF2 antibody at -20oC.